

# CONVEYOR

ROLLER  
CARRIER IDLER

Smart Logistics Smart House Smart Welfare ... Makitech Industrie 4.0

**MAKI** Makitech Co., Ltd.

<http://www.makitech.co.jp> E-mail...[info@makitech.co.jp](mailto:info@makitech.co.jp)

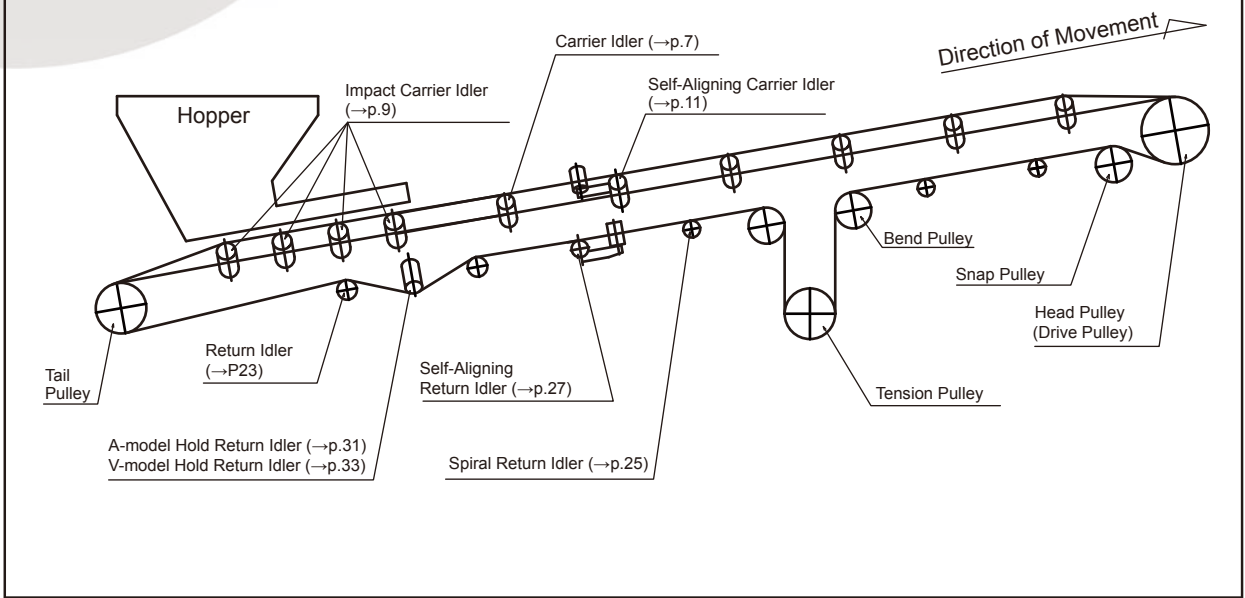


Specifications are subject  
to change without notice.

H2908A-5,000 e.

**MAKI** Makitech Co., Ltd.

# A Guide to Conveyor's Each Part Product Name and Page



## Parts Other Than Those Listed Above

### 1. Carrier-side

- When flat and without troughing angle (In the case of a steeply inclining conveyor belt [a wave-shape ridged belt] or similar being used)  
FC-model flat carrier idler ... p.15-16  
FIC-model flat impact carrier idler ... p.17-18
- For use with V-model and two carrier idlers (In the case of a climber-model rigid conveyor being used) see;  
VC-model carrier idler ... p.19-20
- For the self-aligning carrier idler model used with conveyor belts that can reverse direction, see;  
KACT-model T-model self-aligning carrier idler ... p.13-14
- For conveyors that do not use carrier stands, see;  
KGC-model garland carrier idler ... p.21-22

### 2. Return-side

- For the self-aligning return idler used with conveyor belts that can reverse direction, see;  
KART-model T-model self-aligning return idler ... p.29-30

### 3. Guide Idler

Used in self-aligning (for both KAC and KAR-model) with the purpose of preventing the belt from meandering, however they can also be used individually.

- KCG-model guide idler for carrier use ... p.39-40
- KRG-model guide idler for return use ... p.39-40
- KFG-model guide idler for flat carrier use ... p.39-40

# On Browsing This Catalog

This issue of the catalog has been made to prioritize clarity and easy searching for the reader.

## KC Set product

Carrier Idler Set (JIS B-8803)

Idlers required to be installed on the carrier side of the conveyor.  
Suited to the transporting of dirt, sand, gravel, ore, or stones.  
The troughing angle can be selected from 20°, 30°, or 45°, and also come in standard type or meandering prevention forward inclining type.

Example of Set Model

KC	-	320	-	400
KCB	-	320	-	400
KCB	-	320	-	400
KCB	-	320	-	400

Model

Model	Belt Width	D	φ	m	A	H1	H2	H3	L	n	B	t	Height of Stand	Height of Idler
KC-320-400	400	89.1	145	640	890	125	170	219	242	426	140	190	6.0	11.0
KC-320-450	450	89.1	165	680	940	125	170	226	252	451	140	190	6.0	11.9
KC-320-500	500	89.1	180	740	1020	125	170	231	266	486	140	190	6.0	12.8
KC-320-600	600	89.1	210	840	1140	140	185	256	305	550	150	200	6.0	13.9
KC-320-750	750	114.3	265	1040	1390	150	207	298	361	691	160	210	6.0	16.6
KC-320-900	900	114.3	315	1190	1540	150	207	365	436	801	160	210	6.0	19.3
KC-320-1050	1050	139.8	370	1340	1790	180	250	436	507	1051	180	230	9.0	23.0
KC-320-1200	1200	139.8	420	1490	1940	180	250	494	569	1187	180	230	9.0	25.7

Troughing Angle 20°

Troughing Angle 30°

Troughing Angle 45°

## CR Individual Idler

Individual Carrier Idler

The individual CR-model carrier idler is also used in the KC-model carrier idler set, KAC-model self-aligning carrier idler set and A-model hold return idler set.

Model Denotation

CR - 400

Carrier Idler Belt Width

Model

Model	Belt Width	D	φ	φ1	φ2	c	a	e	d	BBNo.	Idler Weight (kg)
CR-400	400	89.1	145	153	175	3	8	14	20	6204 2RS	2.0
CR-450	450	89.1	165	173	195	3	8	14	20	6204 2RS	2.2
CR-500	500	89.1	180	188	210	3	8	14	20	6204 2RS	2.3
CR-600	600	89.1	210	218	240	3	8	14	20	6204 2RS	2.4
CR-750	750	114.3	265	273	295	3	8	14	20	6204 2RS	3.8
CR-900	900	114.3	315	323	345	3	8	14	20	6204 2RS	4.6
CR-1050	1050	139.8	370	380	410	4	11	18	25	6205 ZZ	7.0
CR-1200	1200	139.8	420	430	460	4	11	18	25	6205 ZZ	7.8

- The pages on left-hand pages show **idlers in sets** and the **individual idler parts** used in the sets on the right-hand page.

- We accept orders by models for idler sets or stands only as well as individual idlers.

Ex1) 600W Carrier Idler Set Troughing Angle 30° without forward inclining ..... KC-330-600  
Ex2) 600W Carrier Idler Set Troughing Angle 30° with forward inclining ..... KC-330-600Z  
Ex3) 750W Individual Return Idler..... RR-750  
Ex4) 500W Self-Aligning Return Idler Set ..... KAR-500

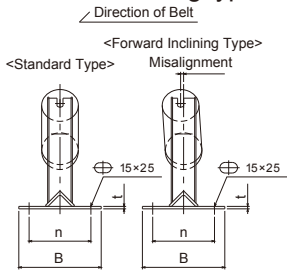
- Points to be Noted When Making an Order

- There are two types of carrier (impact carrier) stand; a standard type and a forward inclining type.

- Beyond its wide use in general, the standard type is used for belts that run both backward and forwards.
- As the figure on the right illustrates, the forward inclining type effectively prevents meandering by generating a misalignment of 2° in the direction of movement of the belt.

It cannot be used with belts that run back and forth.

When an order is made, if there is no clear indication (instruction) specifying the forward inclining type the standard type will be shipped.

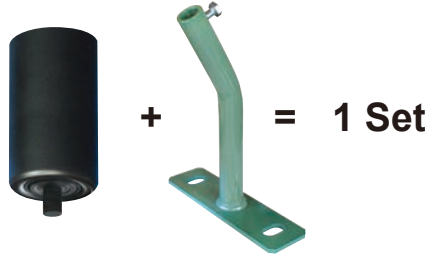


- Guide Idler 'Sets' are

In the case of this set, the set comprises of

**one guide idler + one stand.**

Thus, when ordering from both the left and right lots, **guide idler set will be in two sets.**



- There are certain items that are not included in the catalog, so if you are looking for items with specific troughing angles for the stand and/or idler dimensions; or parts treated for better dust, water and/or friction resistance; or anything else, please feel free to consult us.

# Idler INDEX

05P/06P **SPEC**

## Idler Formats/ Specifications

07P/08P **CARRIER**

Carrier Idler Set (JIS B-8803)  
Individual Carrier Idler

**KC/CR**



09P/10P **CARRIER**

Impact Carrier Idler Set  
Individual Impact Carrier Idler

**KIC/ICR**



11P/12P **CARRIER**

Self-Aligning Carrier Idler Set  
Individual Carrier Idler  
Individual Guide Idler

**KAC/  
CR/GR**



13P/14P **CARRIER**

T-model Self-Aligning Carrier Idler Set  
Individual T-model Carrier Idler  
Individual Center Idler for T-model Carrier

**KACT/TCR/  
TCCR**



15P/16P **CARRIER**

Flat Carrier Idler Set  
Individual Flat Carrier Idler

**KFC/FCR**



17P/18P **CARRIER**

Flat Impact Carrier Idler Set  
Individual Flat Impact Carrier Idler

**KFIC/FICR**



19P/20P **CARRIER**

VC-model Carrier Idler Set  
Individual VC-model Carrier Roller

**VC/VCR**



21P/22P **CARRIER**

Garland Carrier Idler Set  
Individual Garland Carrier Idler  
Fittings for Garland Carrier Idler Use

**KGC/GCR**



23P/24P **RETURN**

Return Idler Set (JIS B-8803)  
Individual Return Idler

**KR/RR**



25P/26P **RETURN**

Spiral Return Idler Set  
Individual Spiral Return Idler

**KSR/SRR**



27P/28P **RETURN**

Self-Aligning Return Idler Set  
Individual Return Idler  
Individual Guide Idler

**KAR/  
RR/GR**



29P/30P **RETURN**

T-model Self-Aligning Return Idler Set  
Individual T-model Return Idler

**KART/TRR**



31P/32P **RETURN**

A-model Hold Return Idler Set  
Individual Carrier Idler

**KARP/CR**



33P/34P **RETURN**

V-model Hold Return Idler Set  
Individual V-model Hold Return Idler

**KVRP/VRPR**



35P/36P **RETURN**

Rubber Sleeved Return Idler Set  
Individual Rubber Sleeved Return Idler

**KGSR/GSRR**



37P/38P **RETURN**

Anti Drop-Off Return Idler Set  
Individual Anti Drop-Off Return Idler

**KRBR/RBRR**



39P/40P **GUIDE**

Guide Idler Set (Individual Guide Idler)

**KCG/KFG/KRG/GR**

Carrier Guide Idler Set  
Flat Guide Idler Set  
Return Guide Idler Set  
Individual Guide Idler

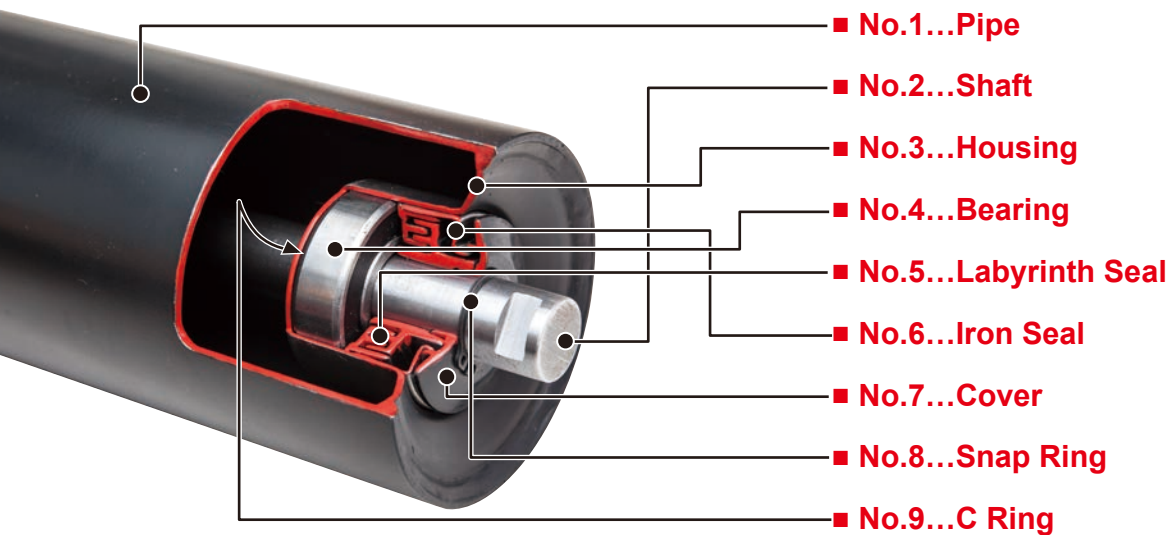


41P/42P **DATA**

**Contact/  
An Introduction to the  
Makitech Product Line**



Standout high-performance idlers  
crafted for confidence!



No.	Parts Name	Material	Discription of Material
1	Pipe	STK400	General-use Carbon Steel Pipe
2	Shaft	SS400	Finished Steel Bar
3	Housing (Bearing case)	SPCC	Cold Rolled Steel Sheet
4	Bearing	SUJ2	Bearing Steel
5	Labyrinth Seal	PA66	Polyamide Resin
6	Iron Seal	SPCC	Cold Rolled Steel Sheet
7	Cover	PA66	Polyamide Resin
8	Snap Ring	S65C	Steel for Springs
9	C Ring	SWC80	Steel for Springs

What is a Labyrinth Seal?

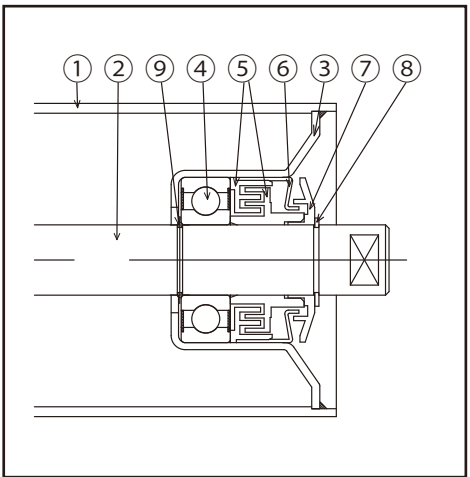
This is a seal used to further the life of the idler by protecting the bearing!

A labyrinth is after all like a maze. The complex, maze-like construction protects the bearing from foreign matter infiltration connected to damage. It also protects from dust or water damageby grease applied inside. The seal provides maximum protection against damage for the bearing, which in turn gives the idler an even longer life.

For more information on the Labyrinth Seal see above or the diagram of the idler's interior on page 6.

(\*There are also some types of idler for which you connect pipes and housing with fasteners.)

TYPE-NY4

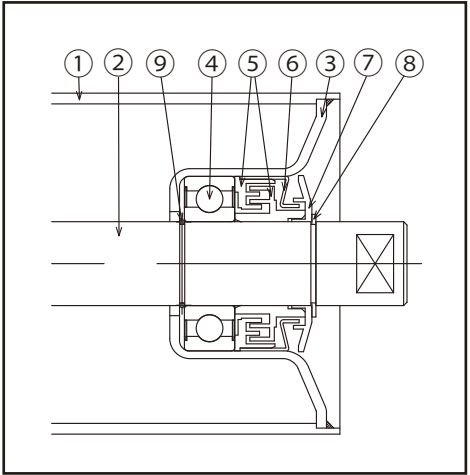


The pipe and housing are welded together and use the  $\phi 20$  shaft diameter labyrinth seal.

Belt width:400W/450W/500W/600W/750W/900W

No.	Parts Name	Part Size/Model
1	Pipe	400W to 600W:Nominal Diameter 3/Outer Diameter $\phi$ 89.1/Thickness 2.8 t 750W to 900W:Nominal Diameter 4/Outer Diameter $\phi$ 114.3/Thickness 3.5 t
2	Shaft	$\phi 20$
3	Housing (Bearing case)	400W to 600W:ZCZ-89 750W to 900W:ZCZ-114
4	Bearing	6204 2RS
5	Labyrinth Seal	MF-20-2
6	Iron Seal	MF-20-1
7	Cover	WG-20
8	Snap Ring	S-20
9	C Ring	O-20

TYPE-NY5

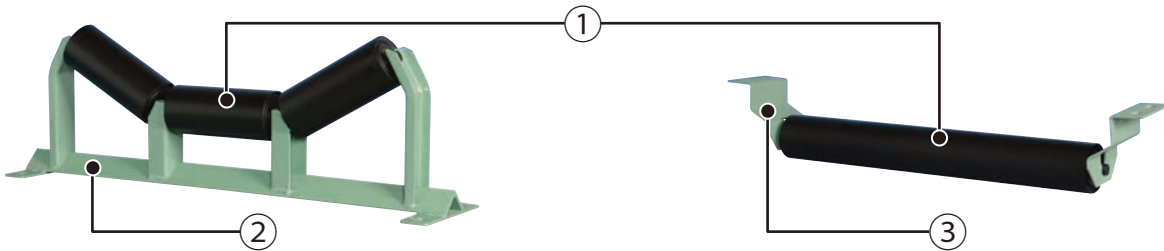


The pipe and housing are welded together and use the  $\phi 25$  shaft diameter labyrinth seal.

Belt Width:1050W/1200W

No.	Parts Name	Part Size/Model
1	Pipe	1050W to 1200W:Nominal Diameter 5/Outer Diameter $\phi$ 139.8/3 Thickness 3.5 t
2	Shaft	$\phi 25$
3	Housing (Bearing case)	ZCZ-139
4	Bearing	6205 ZZ
5	Labyrinth Seal	MF-25-2
6	Iron Seal	MF-25-1
7	Cover	WG-25
8	Snap Ring	S-25
9	C Ring	O-25

Coating



No.	Name	Coat Color	Coating Method
1	Idler	Black: N-1.0	Spray
2	Stand	Light Green: 2.5G6/3	Glaze and Spray
3	Bracket	Light Green: 2.5G6/3	Glaze

## KC

## Carrier Idler Set (JIS B-8803)

An idler required to be installed on the carrier side of the conveyor.  
Suited to the transporting of dirt, sand, gravel, ore, or stones.  
The troughing angle can be selected from 20°, 30°, or 45°,  
and also come in standard type or meandering prevention forward inclining type.



## EXAMPLE OF SET MODEL

Example of Set Product

KC - 320 - 400

Carrier Idler Set 3 Part Troughing Angle

KC - 320 - 400 Z

Those with a forward inclination end in Z.

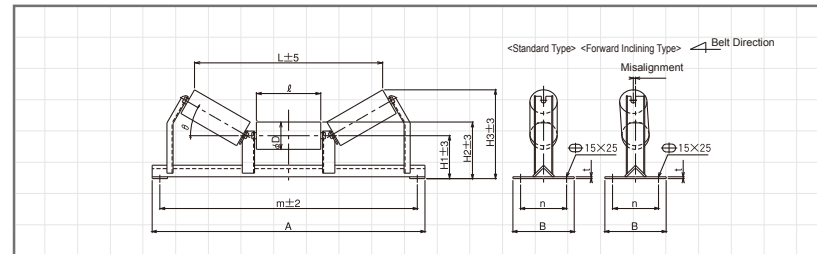
Example of Stand Only

KCB - 320 - 400

Carrier Stand 3 Part Troughing Angle

KCB - 320 - 400 Z

## SIZE



## ● Troughing Angle 20°

(Unit: mm)

Model	Belt Width	D	ℓ	m	A	H1	H2	H3	L	n	B	t	Weight of Set (kg)	Weight of Stand (kg)
KC-320-400	400	89.1	145	640	690	125	170	219	468	140	190	6.0	11.0	5.0
KC-320-450	450	89.1	165	690	740	125	170	226	525	140	190	6.0	11.9	5.3
KC-320-500	500	89.1	180	740	790	125	170	231	568	140	190	6.0	12.6	5.7
KC-320-600	600	89.1	210	840	890	140	185	256	655	150	200	6.0	13.7	6.5
KC-320-750	750	114.3	265	1040	1090	150	207	298	813	160	210	6.0	21.5	10.1
KC-320-900	900	114.3	315	1190	1240	150	207	315	957	160	210	6.0	25.0	11.2
KC-320-1050	1050	139.8	370	1340	1390	180	250	376	1115	180	230	9.0	36.7	15.7
KC-320-1200	1200	139.8	420	1490	1540	180	250	394	1259	180	230	9.0	44.4	21.0

## ● Troughing Angle 30°

(Unit: mm)

Model	Belt Width	D	ℓ	m	A	H1	H2	H3	L	n	B	t	Weight of Set (kg)	Weight of Stand (kg)
KC-330-400	400	89.1	145	640	690	125	170	242	436	140	190	6.0	11.1	5.1
KC-330-450	450	89.1	165	690	740	125	170	252	491	140	190	6.0	12.0	5.4
KC-330-500	500	89.1	180	740	790	125	170	260	532	140	190	6.0	12.8	5.9
KC-330-600	600	89.1	210	840	890	140	185	290	614	150	200	6.0	13.9	6.7
KC-330-750	750	114.3	265	1040	1090	150	207	340	764	160	210	6.0	21.9	10.5
KC-330-900	900	114.3	315	1190	1240	150	207	365	901	160	210	6.0	25.4	11.6
KC-330-1050	1050	139.8	370	1340	1390	180	250	435	1051	180	230	9.0	37.3	16.3
KC-330-1200	1200	139.8	420	1490	1540	180	250	460	1187	180	230	9.0	45.1	21.7

## ● Troughing Angle 45°

(Unit: mm)

Model	Belt Width	D	ℓ	m	A	H1	H2	H3	L	n	B	t	Weight of Set (kg)	Weight of Stand (kg)
KC-345-400	400	89.1	145	640	690	125	170	272	380	140	190	6.0	11.3	5.3
KC-345-450	450	89.1	165	690	740	125	170	286	428	140	190	6.0	12.2	5.6
KC-345-500	500	89.1	180	740	790	125	170	297	465	140	190	6.0	13.0	6.1
KC-345-600	600	89.1	210	840	890	140	185	333	537	150	200	6.0	14.2	7.0
KC-345-750	750	114.3	265	1040	1090	150	207	395	670	160	210	6.0	22.6	11.2
KC-345-900	900	114.3	315	1190	1240	150	207	430	790	160	210	6.0	26.1	12.3
KC-345-1050	1050	139.8	370	1340	1390	180	250	512	933	180	230	9.0	38.2	17.2
KC-345-1200	1200	139.8	420	1490	1540	180	250	547	1054	180	230	9.0	46.1	22.7

## CR

## Individual Carrier Idler

The individual CR-model carrier idler is  
also used in the KC-model carrier idler set, KAC-model  
self-aligning carrier idler set and A-model hold return idler set.



## MODEL DENOTATION

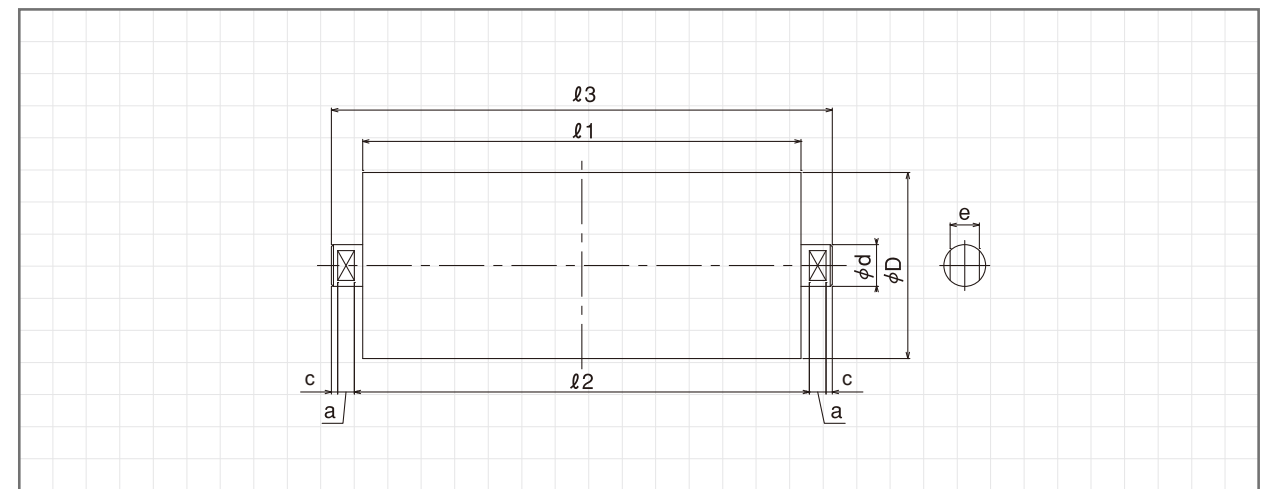
CR

Carrier Idler

400

Belt Width

## SIZE



(Unit: mm)

Model	Belt Width	D	ℓ1	ℓ2	ℓ3	c	a	e	d	BBNo.	Weight of Idler (kg)
CR-400	400	89.1	145	153	175	3	8	14	20	6204 2RS	2.0
CR-450	450	89.1	165	173	195	3	8	14	20	6204 2RS	2.2
CR-500	500	89.1	180	188	210	3	8	14	20	6204 2RS	2.3
CR-600	600	89.1	210	218	240	3	8	14	20	6204 2RS	2.4
CR-750	750	114.3	265	273	295	3	8	14	20	6204 2RS	3.8
CR-900	900	114.3	315	323	345	3	8	14	20	6204 2RS	4.6
CR-1050	1050	139.8	370	380	410	4	11	18	25	6205 ZZ	7.0
CR-1200	1200	139.8	420	430	460	4	11	18	25	6205 ZZ	7.8

## KIC

## Impact Carrier Idler Set

An idler installed under hopper outlet.

Impact comes from crashed stone fallen from hopper outlet is softened by the grooved-type rubber idler, preventing damage to the belt and stand. The troughing angle can be selected from 20°, 30° or 45°.



## MODEL DENOTATION

Example of Set Product

**KIC** - **320** - **400**

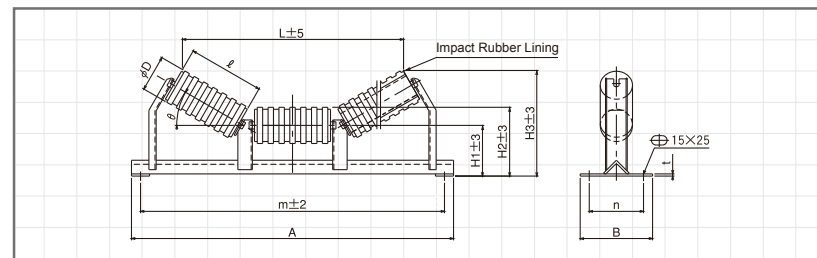
Impact Carrier Idler Set 3 Part Troughing Angle Belt Width

Example of Stand Only

**KICB** - **320** - **400**

Impact Carrier Stand 3 Part Troughing Angle Belt Width

## SIZE



## ● Troughing Angle 20°

(Unit: mm)

Model	Belt Width	D	ℓ	m	A	H1	H2	H3	L	n	B	t	Weight of Set (kg)	Weight of Stand (kg)
KIC-320-400	400	100	145	640	690	125	175	223	458	140	190	6.0	11.6	5.0
KIC-320-450	450	100	165	690	740	125	175	229	512	140	190	6.0	12.5	5.3
KIC-320-500	500	100	180	740	790	125	175	235	557	140	190	6.0	13.5	5.7
KIC-320-600	600	100	210	840	890	140	190	261	646	150	200	6.0	14.6	6.5
KIC-320-750	750	115	265	1040	1090	150	208	296	801	160	210	6.0	21.2	10.1
KIC-320-900	900	115	315	1190	1240	150	208	314	947	160	210	6.0	24.7	11.2
KIC-320-1050	1050	140	370	1340	1390	180	250	376	1110	180	230	9.0	37.9	15.7
KIC-320-1200	1200	140	420	1490	1540	180	250	393	1255	180	230	9.0	45.6	21.0

## ● Troughing Angle 30°

(Unit: mm)

Model	Belt Width	D	ℓ	m	A	H1	H2	H3	L	n	B	t	Weight of Set (kg)	Weight of Stand (kg)
KIC-330-400	400	100	145	640	690	125	175	245	426	140	190	6.0	11.7	5.1
KIC-330-450	450	100	165	690	740	125	175	254	477	140	190	6.0	12.6	5.4
KIC-330-500	500	100	180	740	790	125	175	262	519	140	190	6.0	13.7	5.9
KIC-330-600	600	100	210	840	890	140	190	293	604	150	200	6.0	14.8	6.7
KIC-330-750	750	115	265	1040	1090	150	208	337	753	160	210	6.0	21.6	10.5
KIC-330-900	900	115	315	1190	1240	150	208	362	892	160	210	6.0	25.1	11.6
KIC-330-1050	1050	140	370	1340	1390	180	250	433	1046	180	230	9.0	38.5	16.3
KIC-330-1200	1200	140	420	1490	1540	180	250	459	1183	180	230	9.0	46.3	21.7

## ● Troughing Angle 45°

(Unit: mm)

Model	Belt Width	D	ℓ	m	A	H1	H2	H3	L	n	B	t	Weight of Set (kg)	Weight of Stand (kg)
KIC-345-400	400	100	145	640	690	125	175	274	368	140	190	6.0	11.9	5.3
KIC-345-450	450	100	165	690	740	125	175	287	414	140	190	6.0	12.8	5.6
KIC-345-500	500	100	180	740	790	125	175	298	451	140	190	6.0	13.9	6.1
KIC-345-600	600	100	210	840	890	140	190	335	526	150	200	6.0	15.1	7.0
KIC-345-750	750	115	265	1040	1090	150	208	390	660	160	210	6.0	22.3	11.2
KIC-345-900	900	115	315	1190	1240	150	208	427	783	160	210	6.0	25.8	12.3
KIC-345-1050	1050	140	370	1340	1390	180	250	509	929	180	230	9.0	39.4	17.2
KIC-345-1200	1200	140	420	1490	1540	180	250	545	1050	180	230	9.0	47.3	22.7

## ICR

## Individual Impact Carrier Idler



## MODEL DENOTATION

ICR

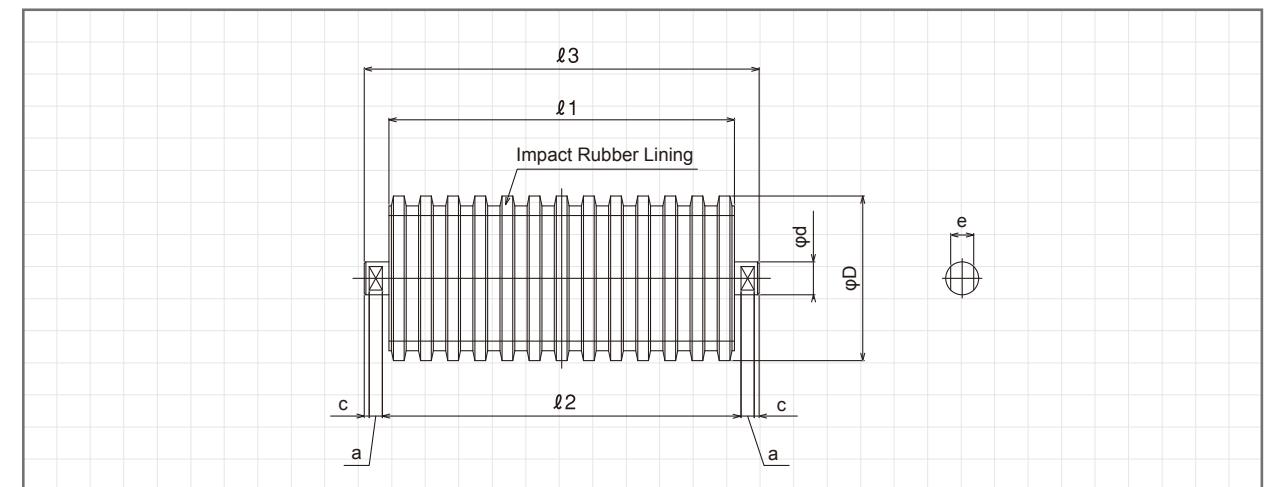
-

400

Impact Carrier Idler

Belt Width

## SIZE



(Unit: mm)

Model	Belt Width	D	ℓ1	ℓ2	ℓ3	c	a	e	d	BBNo.	Weight of Idler (kg)
ICR-400	400	100	145	153	175	3	8	14	20	6204 2RS	2.2
ICR-450	450	100	165	173	195	3	8	14	20	6204 2RS	2.4
ICR-500	500	100	180	188	210	3	8	14	20	6204 2RS	2.6
ICR-600	600	100	210	218	240	3	8	14	20	6204 2RS	2.7
ICR-750	750	115	265	273	295	3	8	14	20	6204 2RS	3.7
ICR-900	900	115	315	323	345	3	8	14	20	6204 2RS	4.5
ICR-1050	1050	140	370	380	410	4	11	18	25	6205 ZZ	7.4
ICR-1200	1200	140	420	430	460	4	11	18	25	6205 ZZ	8.2



## KAC

## Self-Aligning Carrier Idler Set

An idler to be affixed to the sides of the carrier to prevent meandering.  
As the belt makes contact with the guide idlers on each end while the conveyor belt is in use, it serves the purpose of pushing the meandering belt back to the center.  
The troughing angle can be selected from 20°, 30° or 45°.



## MODEL DENOTATION

## SIZE

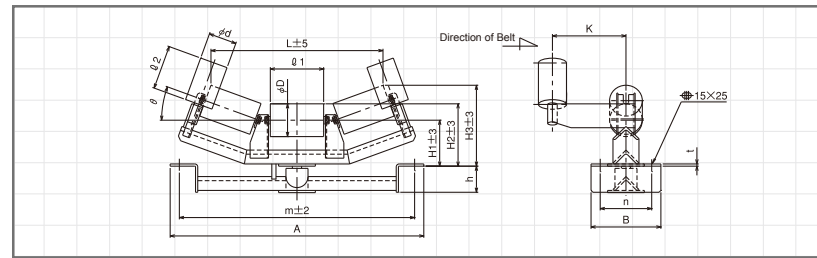
Example of Set Product

**KAC** - **320** - **400**  
Self-Aligning Carrier Idler Set 3 Part Troughing Angle Belt Width

Example of Stand Only

**KACB** - **320** - **400**  
Self-Aligning Carrier Stand 3 Part Troughing Angle Belt Width

\*Not including Guide Idler



## ● Troughing Angle 20°

(Unit: mm)

Model	Belt Width	D	ℓ1	d	ℓ2	m	A	H1	H2	H3	L	h	K	n	B	t	Weight of Set (kg)	Weight of Stand (kg)
KAC-320-400	400	89.1	145	76.3	120	640	690	125	170	219	468	71	200	140	190	6.0	21.1	12.5
KAC-320-450	450	89.1	165	76.3	120	690	740	125	170	226	525	71	200	140	190	6.0	22.3	13.1
KAC-320-500	500	89.1	180	76.3	120	740	790	125	170	231	568	71	200	140	190	6.0	23.2	13.7
KAC-320-600	600	89.1	210	76.3	120	840	890	140	185	256	655	71	200	150	200	6.0	25.0	15.2
KAC-320-750	750	114.3	265	76.3	120	1040	1090	150	207	298	813	71	200	160	210	6.0	33.8	19.8
KAC-320-900	900	114.3	315	76.3	120	1190	1240	150	207	315	957	71	200	160	210	6.0	37.9	21.5
KAC-320-1050	1050	139.8	370	89.1	150	1340	1390	180	250	376	1115	81	240	180	230	9.0	57.9	33.5
KAC-320-1200	1200	139.8	420	89.1	150	1490	1540	180	250	394	1259	81	240	180	230	9.0	62.7	35.9

## ● Troughing Angle 30°

(Unit: mm)

Model	Belt Width	D	ℓ1	d	ℓ2	m	A	H1	H2	H3	L	h	K	n	B	t	Weight of Set (kg)	Weight of Stand (kg)
KAC-330-400	400	89.1	145	76.3	120	640	690	125	170	242	436	71	200	140	190	6.0	21.3	12.7
KAC-330-450	450	89.1	165	76.3	120	690	740	125	170	252	491	71	200	140	190	6.0	22.5	13.3
KAC-330-500	500	89.1	180	76.3	120	740	790	125	170	260	532	71	200	140	190	6.0	23.4	13.9
KAC-330-600	600	89.1	210	76.3	120	840	890	140	185	290	614	71	200	150	200	6.0	25.3	15.5
KAC-330-750	750	114.3	265	76.3	120	1040	1090	150	207	340	764	71	200	160	210	6.0	34.4	20.4
KAC-330-900	900	114.3	315	76.3	120	1190	1240	150	207	365	901	71	200	160	210	6.0	38.5	22.1
KAC-330-1050	1050	139.8	370	89.1	150	1340	1390	180	250	435	1051	81	240	180	230	9.0	58.6	34.2
KAC-330-1200	1200	139.8	420	89.1	150	1490	1540	180	250	460	1187	81	240	180	230	9.0	63.4	36.6

## ● Troughing Angle 45°

(Unit: mm)

Model	Belt Width	D	ℓ1	d	ℓ2	m	A	H1	H2	H3	L	h	K	n	B	t	Weight of Set (kg)	Weight of Stand (kg)
KAC-345-400	400	89.1	145	76.3	120	640	690	125	170	272	380	71	200	140	190	6.0	21.7	13.1
KAC-345-450	450	89.1	165	76.3	120	690	740	125	170	286	428	71	200	140	190	6.0	22.9	13.7
KAC-345-500	500	89.1	180	76.3	120	740	790	125	170	297	465	71	200	140	190	6.0	23.8	14.3
KAC-345-600	600	89.1	210	76.3	120	840	890	140	185	333	537	71	200	150	200	6.0	25.7	15.9
KAC-345-750	750	114.3	265	76.3	120	1040	1090	150	207	395	670	71	200	160	210	6.0	35.0	21.0
KAC-345-900	900	114.3	315	76.3	120	1190	1240	150	207	430	790	71	200	160	210	6.0	39.1	22.7
KAC-345-1050	1050	139.8	370	89.1	150	1340	1390	180	250	512	933	81	240	180	230	9.0	59.6	35.2
KAC-345-1200	1200	139.8	420	89.1	150	1490	1540	180	250	547	1054	81	240	180	230	9.0	64.4	37.6

## CR

## Individual Carrier Idler

Individual CR-model carrier idlers are also used in the KC-model carrier idler set, KAC-model self-aligning carrier idler set and A-model hold return idler set.



## MODEL DENOTATION

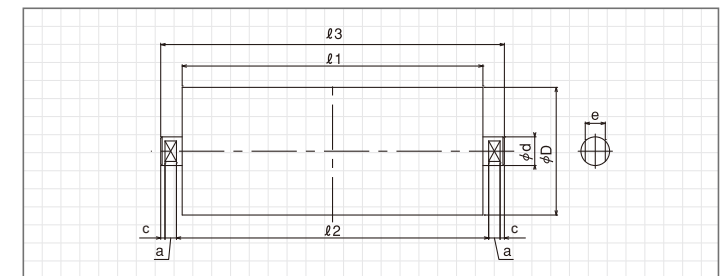
## SIZE

CR

Carrier Idler

400

Belt Width



(Unit: mm)

Model	Belt Width	D	ℓ1	ℓ2	ℓ3	c	a	e	d	BBNo.	Weight of Idler (kg)
CR-400	400	89.1	145	153	175	3	8	14	20	6204 2RS	2.0
CR-450	450	89.1	165	173	195	3	8	14	20	6204 2RS	2.2
CR-500	500	89.1	180	188	210	3	8	14	20	6204 2RS	2.3
CR-600	600	89.1	210	218	240	3	8	14	20	6204 2RS	2.4
CR-750	750	114.3	265	273	295	3	8	14	20	6204 2RS	3.8
CR-900	900	114.3	315	323	345	3	8	14	20	6204 2RS	4.6
CR-1050	1050	139.8	370	380	410	4	11	18	25	6205 ZZ	7.0
CR-1200	1200	139.8	420	430	460	4	11	18	25	6205 ZZ	7.8

## GR

## Individual Guide Idler

The individual GR-model guide idler is also used in the KAC-model self-aligning carrier idler set, the KAR-model self-aligning return idler set and each of the KCG-model/KRG-model/KFG-model guide idler sets.



## MODEL DENOTATION

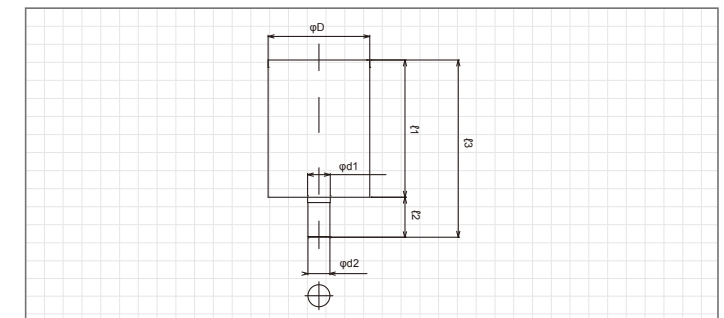
## SIZE

GR

Guide Idler

120

Idler Length



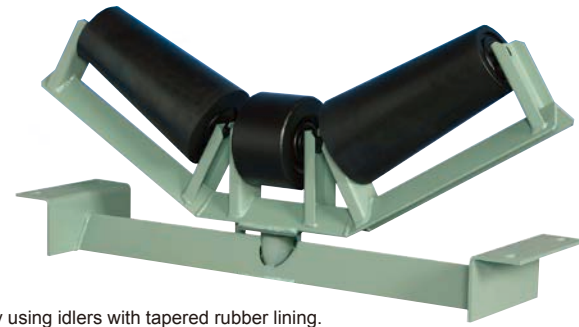
(Unit: mm)

Model	Belt Width	D	ℓ1	ℓ2	ℓ3	d1	d2	BBNo.	Weight of Idler (kg)
GR-120	400~600	76.3	120	30	150	17	16.5	6203 ZZ	1.3
GR-120	750	76.3	120	30	150	17	16.5	6203 ZZ	1.3
GR-120	900	76.3	120	30	150	17	16.5	6203 ZZ	1.3
GR-150	1050~1200	89.1	150	30	180	17	16.5	6203 ZZ	1.7

# KACT

## T-model Self-Aligning Carrier Idler Set

With the purpose of correcting meandering in the same way as the KAC-model self-aligning carrier idler set, meandering can be corrected even without a guide idler on both ends by using idlers with tapered rubber lining. In addition, the friction of the idler and belt means damage to the belt can be greatly prevented by the use of rubber lining. This is mainly used for conveyors that perform forward and reverse movement.



### MODEL DENOTATION

Example of Set Product

**KACT** - **320** - **400**

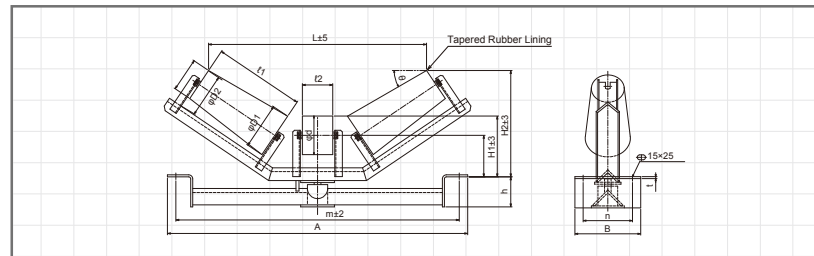
T-model Self-Aligning Carrier Idler Set 3 Part Troughing Angle Belt Width

Example of Stand Only

**KACTB** - **320** - **400**

T-model Self-Aligning Carrier Stand 3 Part Troughing Angle Belt Width

### SIZE



### ● Troughing Angle 20°

(Unit: mm)

Model	Belt Width	D1	D2	d	ℓ1	ℓ2	m	A	H1	H2	L	h	n	B	t	Weight of Set (kg)	Weight of Stand (kg)
KACT-320-400	400	128	100	-	210	-	640	690	-	235	460	95	140	190	6.0	19.1	11.9
KACT-320-450	450	128	100	-	210	-	690	740	-	235	492	94	140	190	6.0	19.5	12.3
KACT-320-500	500	130	100	114.3	220	90	740	790	165	250	587	94	140	190	6.0	22.9	13.6
KACT-320-600	600	137	100	114.3	270	90	840	890	180	275	665	89	150	200	6.0	26.4	15.1
KACT-320-750	750	141	100	114.3	300	110	1040	1090	202	307	770	79	160	210	6.0	32.8	20.0
KACT-320-900	900	153	100	114.3	390	130	1190	1240	197	331	952	95	160	210	6.0	39.4	22.4
KACT-320-1050	1050	159	100	139.8	420	150	1340	1390	240	384	1070	99	180	230	9.0	54.6	33.3
KACT-320-1200	1200	171	100	139.8	500	180	1490	1540	240	405	1235	113	180	230	9.0	63.3	36.7

### ● Troughing Angle 30°

(Unit: mm)

Model	Belt Width	D1	D2	d	ℓ1	ℓ2	m	A	H1	H2	L	h	n	B	t	Weight of Set (kg)	Weight of Stand (kg)
KACT-330-400	400	128	100	-	210	-	640	690	-	264	450	95	140	190	6.0	19.4	12.2
KACT-330-450	450	128	100	-	210	-	690	740	-	262	463	94	140	190	6.0	19.8	12.6
KACT-330-500	500	130	100	114.3	220	90	740	790	165	275	529	94	140	190	6.0	23.1	13.8
KACT-330-600	600	137	100	114.3	270	90	840	890	180	315	646	89	150	200	6.0	26.7	15.4
KACT-330-750	750	141	100	114.3	300	110	1040	1090	202	353	742	79	160	210	6.0	33.4	20.6
KACT-330-900	900	153	100	114.3	390	130	1190	1240	197	390	926	95	160	210	6.0	40.1	23.1
KACT-330-1050	1050	159	100	139.8	420	150	1340	1390	240	456	1040	99	180	230	9.0	55.8	34.5
KACT-330-1200	1200	171	100	139.8	500	180	1490	1540	240	490	1192	113	180	230	9.0	64.5	37.9

### ● Troughing Angle 45°

(Unit: mm)

Model	Belt Width	D1	D2	d	ℓ1	ℓ2	m	A	H1	H2	L	h	n	B	t	Weight of Set (kg)	Weight of Stand (kg)
KACT-345-400	400	128	100	-	210	-	640	690	-	295	380	95	140	190	6.0	19.8	12.6
KACT-345-450	450	128	100	114.3	210	90	690	740	165	314	438	79	140	190	6.0	22.6	13.5
KACT-345-500	500	130	100	114.3	220	90	740	790	165	320	466	79	140	190	6.0	23.5	14.2
KACT-345-600	600	137	100	114.3	270	150	840	890	180	371	569	89	150	200	6.0	27.9	15.9
KACT-345-750	750	141	100	114.3	300	150	1040	1090	202	415	677	79	160	210	6.0	34.7	21.5
KACT-345-900	900	153	100	114.3	390	190	1190	1240	197	474	831	95	160	210	6.0	42.1	24.4
KACT-345-1050	1050	159	100	139.8	420	250	1340	1390	240	538	935	99	180	230	9.0	58.9	36.0
KACT-345-1200	1200	171	100	139.8	500	320	1490	1540	240	594	1094	113	180	230	9.0	69.2	40.4

# TCR

## Individual T-model Carrier Idler

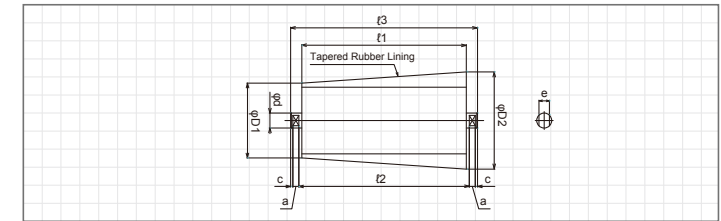


### MODEL DENOTATION

**TCR** - **400**

T-model Carrier Idler Belt Width

### SIZE



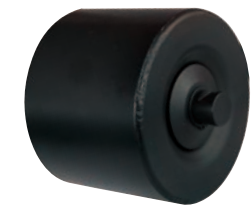
### ● T-model Carrier Idler

(Unit: mm)

Model	Belt Width	D1	D2	ℓ1	ℓ2	ℓ3	c	a	e	d	BBNo.	Weight of Idler (kg)
TCR-400	400	100	128	210	218	240	3	8	14	20	6204 2RS	3.6
TCR-450	450	100	128	210	218	240	3	8	14	20	6204 2RS	3.6
TCR-500	500	100	130	220	228	250	3	8	14	20	6204 2RS	3.7
TCR-600	600	100	137	270	278	300	3	8	14	20	6204 2RS	4.7
TCR-750	750	100	141	300	308	330	3	8	14	20	6204 2RS	5.3
TCR-900	900	100	153	390	398	420	3	8	14	20	6204 2RS	7.3
TCR-1050	1050	100	159	420	430	460	4	11	18	25	6205 ZZ	8.8
TCR-1200	1200	100	171	500	510	540	4	11	18	25	6205 ZZ	11.2

# TCCR

## Individual Center Idler for T-model Carrier



### MODEL DENOTATION

For Troughing Angles 20°, 30°

**TCCR** - **500**

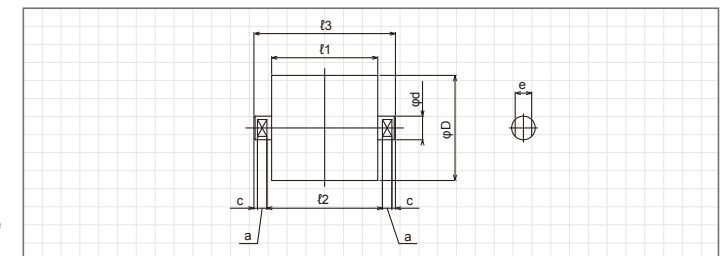
T-model Carrier Idler Center Idler Belt Width

For Troughing Angle 45°

**TCCR** - **450** - **45**

T-model Carrier Idler Center Idler Belt Width Troughing Angle

### SIZE



### ● 20°, 30° Center Idler for T-model Carrier

(Unit: mm)

Model	Belt Width	D	ℓ1	ℓ2	ℓ3	c	a	e	d	BBNo.	Weight of Idler (kg)
TCCR-500	500	114.3	90	98	120	3	8	14	20	6204 2RS	1.9
TCCR-600	600	114.3	90	98	120	3	8	14	20	6204 2RS	1.9
TCCR-750	750	114.3	110	118	140	3	8	14	20	6204 2RS	2.2
TCCR-900	900	114.3	130	138	160	3	8	14	20	6204 2RS	2.4
TCCR-1050	1050	139.8	150	160	190	4	11	18	25	6205 ZZ	3.7
TCCR-1200	1200	139.8	180	190	220	4	11	18	25	6205 ZZ	4.2

### ● 45° Center Idler for T-model Carrier

(Unit: mm)

Model	Belt Width	D	ℓ1	ℓ2	ℓ3	c	a	e	d	BBNo.	Weight of Idler (kg)
TCCR-450	450	114.3	90	98	120	3	8	14	20	6204 2RS	1.9
TCCR-500	500	114.3	90	98	120	3	8	14	20	6204 2RS	1.9
TCCR-600	600	114.3	150	158	180	3	8	14	20	6204 2RS	2.6
TCCR-750	750	114.3	150	158	180	3	8	14	20	6204 2RS	2.6
TCCR-900	900	114.3	190	198	220	3	8	14	20	6204 2RS	3.1
TCCR-1050	1050	139.8	250	260	290	4	11	18	25	6205 ZZ	5.3
TCCR-1200	1200	139.8	320	330	360	4	11	18	25	6205 ZZ	6.4



# KFC

## Flat Carrier Idler Set

An idler required to be installed on the carrier side of the flat conveyor. Used for straight transport of bags and boxed items, etc. Types are divided into 'bracket-type' and 'stand-type' by belt width.

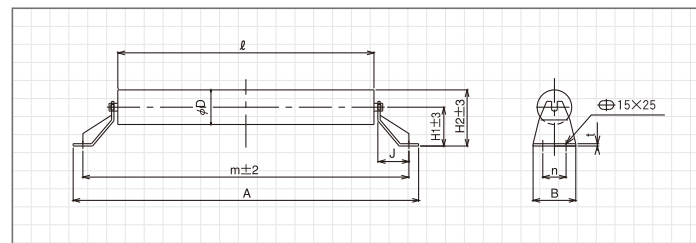


### • Bracket-Type

#### MODEL DENOTATION

Example of Bracket Type	<b>KFC</b>	-	<b>1</b>	-	<b>400</b>
	Flat Carrier Idler Set		Type		Belt Width
Example of Bracket Only	<b>FH</b>	-	<b>400</b>		
	Bracket for Flat Carrier		Belt Width		

#### SIZE



(Unit: mm)

Model	Belt Width	D	ℓ	m	A	H1	H2	J	n	B	t	Weight of Set (kg)	Weight of Bracket (kg) (Set of 2)
KFC-1-400	400	89.1	460	640	690	100	145	80	60	120	4.5	6.4	1.6
KFC-1-450	450	89.1	510	690	740	100	145	80	60	120	4.5	6.8	1.6
KFC-1-500	500	89.1	560	740	790	100	145	80	60	120	4.5	7.2	1.6
KFC-1-600	600	89.1	660	840	890	100	145	80	60	120	4.5	8.2	1.6
KFC-1-750	750	114.3	850	1040	1090	100	157	80	60	120	4.5	12.8	1.6
KFC-1-900	900	114.3	1000	1190	1240	100	157	80	60	120	4.5	14.6	1.6

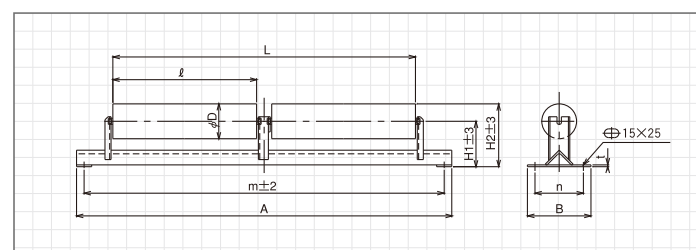
The KFC-1 bracket weight is that of two brackets, one on the left and one on the right.

### • Stand-Type

#### MODEL DENOTATION

Example of Stand Type	<b>KFC</b>	-	<b>2</b>	-	<b>900</b>
	Flat Carrier Idler Set		Type		Belt Width
Example of Stand Only	<b>KFCB</b>	-	<b>2</b>	-	<b>900</b>
	Stand for Flat Carrier Idler				

#### SIZE



(Unit: mm)

Model	Belt Width	D	ℓ	m	A	H1	H2	L	n	B	t	Weight of Set (kg)	Weight of Stand (kg)
KFC-2-900	900	114.3	475	1190	1240	150	207	1000	160	210	6.0	23.3	10.3
KFC-2-1050	1050	139.8	550	1340	1390	180	250	1150	180	230	9.0	33.0	13.4
KFC-2-1200	1200	139.8	625	1490	1540	180	250	1300	180	230	9.0	40.7	18.7

The stand-type can also be manufactured in the form of the single part model.

# FCR

## Individual Flat Carrier Idler

The individual RR-model return idler can also be used with the KR-model return idler set, KFC-1-model flat carrier idler set and KAR-model self-aligning return idler set.



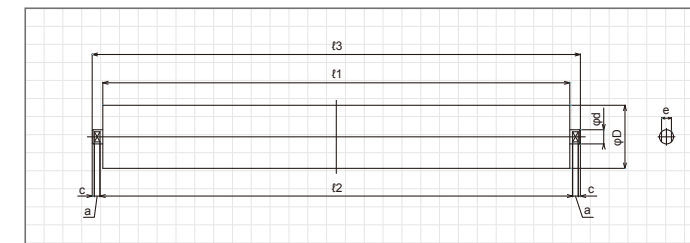
# FCR1

## Individual Flat Carrier Idler - Single Part Model

#### MODEL DENOTATION

<b>FCR1</b>	-	<b>400</b>
Flat Carrier Idler - Single Part Model		Belt Width

#### SIZE



(Unit: mm)

Model	Belt Width	D	ℓ1	ℓ2	ℓ3	c	a	e	d	BBNo.	Weight of Idler (kg)
FCR1-400	400	89.1	460	480	505	4.5	8	14	20	6204 2RS	4.8
FCR1-450	450	89.1	510	530	555	4.5	8	14	20	6204 2RS	5.2
FCR1-500	500	89.1	560	580	605	4.5	8	14	20	6204 2RS	5.6
FCR1-600	600	89.1	660	680	705	4.5	8	14	20	6204 2RS	6.6
FCR1-750	750	114.3	850	880	905	4.5	8	14	20	6204 2RS	11.2
FCR1-900	900	114.3	1000	1030	1055	4.5	8	14	20	6204 2RS	13.0

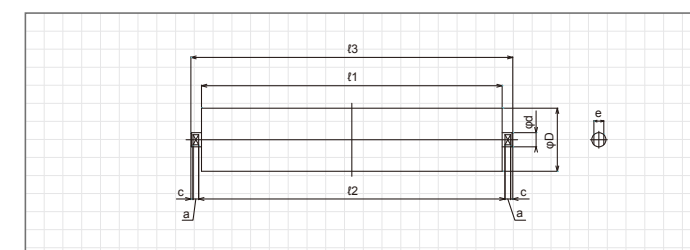
# FCR2

## Individual Flat Carrier Idler - Two Part Model

#### MODEL DENOTATION

<b>FCR2</b>	-	<b>900</b>
Flat Carrier Idler - Two Part Model		Belt Width

#### SIZE



(Unit: mm)

Model	Belt Width	D	ℓ1	ℓ2	ℓ3	c	a	e	d	BBNo.	Weight of Idler (kg)
FCR2-900	900	114.3	475	483	505	3	8	14	20	6204 2RS	6.5
FCR2-1050	1050	139.8	550	560	590	4	11	18	25	6205 ZZ	9.8
FCR2-1200	1200	139.8	625	635	665	4	11	18	25	6205 ZZ	11.0

# KFIC

## Flat Impact Carrier Idler Set

As with the impact carrier idler, any impact is softened by the grooved-type rubber idler, preventing damage to the belt and stand. Types are divided into 'bracket-type' and 'stand-type' by belt width.



### • Bracket-Type

MODEL DENOTATION

Example of Bracket Type

**KFIC** - **1** - **400**  
Flat Impact Carrier Idler Set      Type      Belt Width

Example of Bracket Only

**FH** - **400**  
Bracket for Flat Impact Carrier      Belt Width

SIZE

(Unit: mm)													
Model	Belt Width	D	ℓ	m	A	H1	H2	J	n	B	t	Weight of Set (kg)	Weight of Bracket (kg) (Set of 2)
KFIC-1-400	400	100	460	640	690	100	150	80	60	120	4.5	7.0	1.6
KFIC-1-450	450	100	510	690	740	100	150	80	60	120	4.5	7.5	1.6
KFIC-1-500	500	100	560	740	790	100	150	80	60	120	4.5	8.0	1.6
KFIC-1-600	600	100	660	840	890	100	150	80	60	120	4.5	9.1	1.6
KFIC-1-750	750	115	850	1040	1090	100	158	80	60	120	4.5	12.4	1.6
KFIC-1-900	900	115	1000	1190	1240	100	158	80	60	120	4.5	14.2	1.6

The KFIC-1 bracket weight is that of two brackets, one on the left and one on the right.

### • Stand-Type

MODEL DENOTATION

Example of Stand Type

**KFIC** - **2** - **900**  
Flat Impact Carrier Idler Set      Type      Belt Width

Example of Stand Only

**KFICB** - **2** - **900**  
Stand for Flat Impact Carrier

SIZE

(Unit: mm)													
Model	Belt Width	D	ℓ	m	A	H1	H2	L	n	B	t	Weight of Set (kg)	Weight of Stand (kg)
KFIC-2-900	900	115	475	1190	1240	150	208	1000	160	210	6.0	22.9	10.3
KFIC-2-1050	1050	140	550	1340	1390	180	250	1150	180	230	9.0	34.4	13.4
KFIC-2-1200	1200	140	625	1490	1540	180	250	1300	180	230	9.0	42.3	18.7

The stand-type can also be manufactured in the form of the single part model.

# FICR

## Individual Flat Impact Carrier Idler

The individual RR-model return idler can also be used with the KR-model idler set, KFC-1-model flat carrier idler set and KAR-model self-aligning return idler set.



## FICR1

### Individual Flat Impact Carrier Idler - Single Part Model

MODEL DENOTATION

**FICR1** - **400**  
Flat Impact Carrier Idler - Single Part Model      Belt Width

SIZE

(Unit: mm)											
Model	Belt Width	D	ℓ1	ℓ2	ℓ3	c	a	e	d	BBNo.	Weight of Idler (kg)
FICR1-400	400	100	460	480	505	4.5	8	14	20	6204 2RS	5.4
FICR1-450	450	100	510	530	555	4.5	8	14	20	6204 2RS	5.9
FICR1-500	500	100	560	580	605	4.5	8	14	20	6204 2RS	6.4
FICR1-600	600	100	660	680	705	4.5	8	14	20	6204 2RS	7.5
FICR1-750	750	115	850	880	905	4.5	8	14	20	6204 2RS	10.8
FICR1-900	900	115	1000	1030	1055	4.5	8	14	20	6204 2RS	12.6

## FICR2

### Individual Flat Impact Carrier Idler - Two Part Model

MODEL DENOTATION

**FICR2** - **900**  
Flat Impact Carrier Idler - Two Part Model      Belt Width

SIZE

(Unit: mm)											
Model	Belt Width	D	ℓ1	ℓ2	ℓ3	c	a	e	d	BBNo.	Weight of Idler (kg)
FICR2-900	900	115	475	483	505	3	8	14	20	6204 2RS	6.3
FICR2-1050	1050	140	550	560	590	4	11	18	25	6205 ZZ	10.5
FICR2-1200	1200	140	625	635	665	4	11	18	25	6205 ZZ	11.8

## VC

## VC-model Carrier Idler Set

An idler required to be installed on the carrier side of the climber-model rigid conveyor.  
Different to the KC-model carrier idler in that this model is suited to the transport of lighter items.  
The troughing angle can be selected from 20° or 30°.



## MODEL DENOTATION

Example of Set Product

VC

VC-model  
Carrier Idler Set

- 220

2 Part  
Troughing Angle

- 400

Belt Width

Example of Stand Only

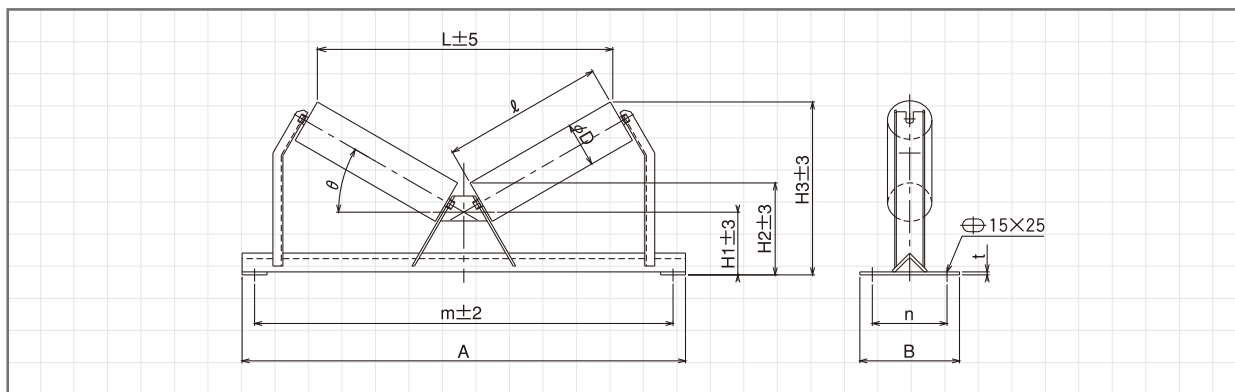
VCB

VC-model  
Carrier Stand

- 220

- 400

## SIZE



## ● Troughing Angle 20°

(Unit: mm)

Model	Belt Width	D	ℓ	m	A	H1	H2	H3	L	n	B	t	Weight of Set (kg)	Weight of Stand (kg)
VC-220-400	400	89.1	225	640	690	125	178	255	454	140	190	6.0	10.7	5.5
VC-220-450	450	89.1	250	690	740	125	178	264	501	140	190	6.0	11.3	5.7
VC-220-500	500	89.1	275	740	790	125	178	272	548	140	190	6.0	11.9	5.9
VC-220-600	600	89.1	325	840	890	125	178	289	642	150	200	6.0	13.6	6.8
VC-220-750	750	114.3	415	1040	1090	140	205	347	803	160	210	6.0	22.3	10.7
VC-220-900	900	114.3	490	1190	1240	140	205	373	944	160	210	6.0	25.2	11.8

## ● Troughing Angle 30°

(Unit: mm)

Model	Belt Width	D	ℓ	m	A	H1	H2	H3	L	n	B	t	Weight of Set (kg)	Weight of Stand (kg)
VC-230-400	400	89.1	225	640	690	125	185	298	419	140	190	6.0	11.1	5.9
VC-230-450	450	89.1	250	690	740	125	185	310	463	140	190	6.0	11.7	6.1
VC-230-500	500	89.1	275	740	790	125	185	323	506	140	190	6.0	12.3	6.3
VC-230-600	600	89.1	325	840	890	125	185	348	593	150	200	6.0	14.2	7.4
VC-230-750	750	114.3	415	1040	1090	140	215	423	750	160	210	6.0	23.5	11.9
VC-230-900	900	114.3	490	1190	1240	140	215	460	880	160	210	6.0	26.5	13.1

We can also assemble VR-model return idler. Feel free to inquire.

## VCR

## Individual VC-model Carrier Idler



## MODEL DENOTATION

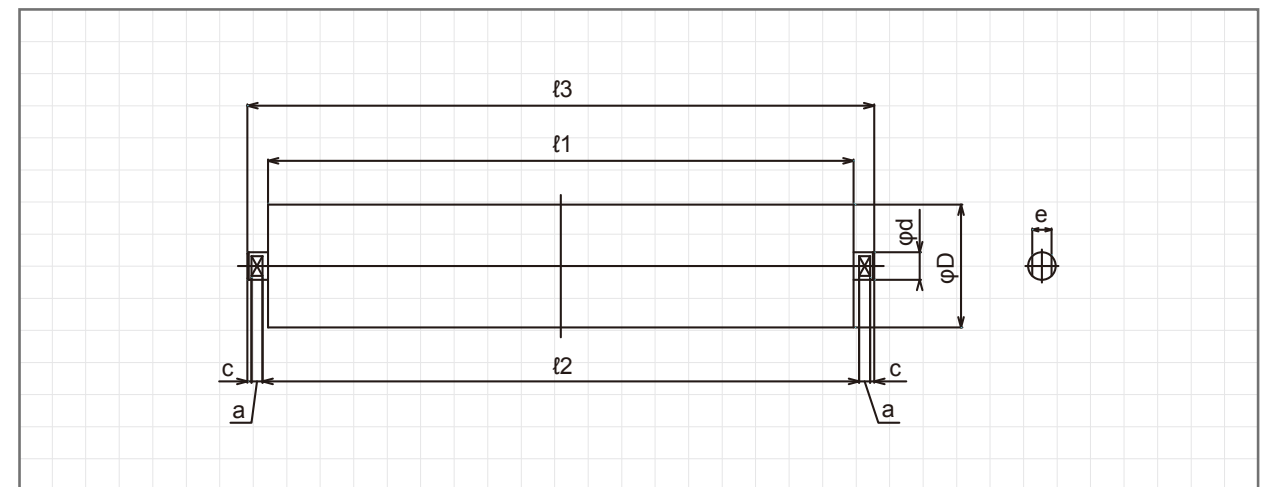
VCR

VC-model  
Carrier Idler

- 400

Belt Width

## SIZE



(Unit: mm)

Model	Belt Width	D	ℓ1	ℓ2	ℓ3	c	a	e	d	BBNo.	Weight of Idler (kg)
VCR-400	400	89.1	225	233	255	3	8	14	20	6204 2RS	2.6
VCR-450	450	89.1	250	258	280	3	8	14	20	6204 2RS	2.8
VCR-500	500	89.1	275	283	305	3	8	14	20	6204 2RS	3.0
VCR-600	600	89.1	325	333	355	3	8	14	20	6204 2RS	3.4
VCR-750	750	114.3	415	423	445	3	8	14	20	6204 2RS	5.8
VCR-900	900	114.3	490	498	520	3	8	14	20	6204 2RS	6.7



# KGC

## Garland Carrier Idler Set

One of the carrier idlers often used at fresh concrete plants, this a hanging type that does not use a carrier stand.



### MODEL DENOTATION

**KGC**

Garland Carrier  
Idler Set

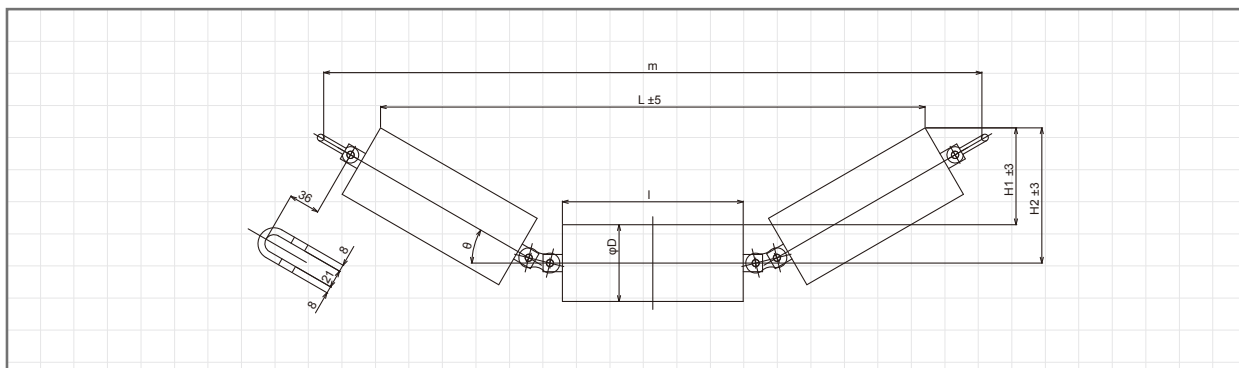
**330**

3 Part  
Troughing Angle

**400**

Belt Width

### SIZE



#### • Troughing Angle 30°

(Unit: mm)

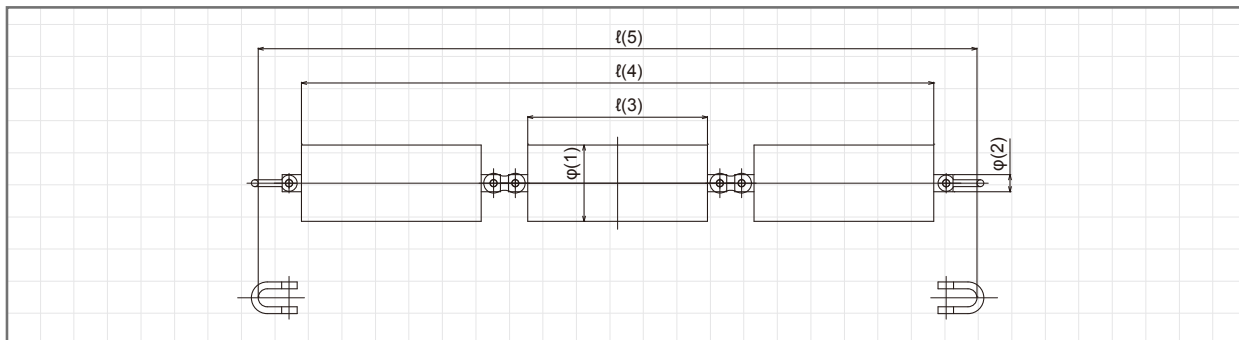
Model	Belt Width	D	ℓ	m	H1	H2	L	Weight of Set (kg)
KGC-330-400	400	89.1	145	587	80	125	455	6.6
KGC-330-450	450	89.1	165	642	90	135	510	7.2
KGC-330-500	500	89.1	180	683	97	142	551	7.5
KGC-330-600	600	89.1	210	765	112	157	633	7.8
KGC-330-750	750	114.3	265	915	138	196	770	12.0
KGC-330-900	900	114.3	315	1051	163	220	907	14.4

#### • Troughing Angle 45°

(Unit: mm)

Model	Belt Width	D	ℓ	m	H1	H2	L	Weight of Set (kg)
KGC-345-400	400	89.1	145	518	110	154	383	6.6
KGC-345-450	450	89.1	165	566	124	169	431	7.2
KGC-345-500	500	89.1	180	603	134	179	468	7.5
KGC-345-600	600	89.1	210	675	155	200	541	7.8
KGC-345-750	750	114.3	265	808	190	247	656	12.0
KGC-345-900	900	114.3	315	929	225	282	777	14.4

• Referential Dimensional Diagram Since the measurements can vary according to the manufacturer, please indicate the dimension from the diagram (1) to (5) below when placing an order or making an estimate.



# GCR

## Individual Garland Carrier Idler



### MODEL DENOTATION

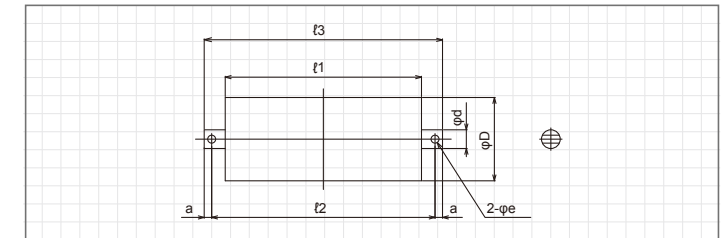
**GCR**

Garland Carrier Idler

**400**

Belt Width

### SIZE



(Unit: mm)

Model	Belt Width	D	ℓ1	ℓ2	ℓ3	a	e	d	BBNo.	Weight of Idler (kg)
GCR-400	400	89.1	145	174	190	8	8.5	20	6204 2RS	2.1
GCR-450	450	89.1	165	194	210	8	8.5	20	6204 2RS	2.3
GCR-500	500	89.1	180	209	225	8	8.5	20	6204 2RS	2.4
GCR-600	600	89.1	210	239	255	8	8.5	20	6204 2RS	2.5
GCR-750	750	114.3	265	294	310	8	8.5	20	6204 2RS	3.9
GCR-900	900	114.3	315	344	360	8	8.5	20	6204 2RS	4.7

## Fittings for Garland Carrier Idler Use

### • Joint Link

#### MODEL DENOTATION

Belt width for 400 to 900W

**JL-80**


### • Shackle

#### MODEL DENOTATION

Belt width for 400 to 900W

**SA-80**


\*We also sell individual idlers (from single part models upward) as well as all parts necessary for installation.

# KR

## Return Idler (JIS B-8803)



An idler required to be installed on the return side of the conveyor.  
It rotates while supporting the belt. Since dirt of transporting item cause pipe's wear and damage easily on the return side, it result meandering of the belt.  
We recommend using the spiral return idler and belt cleaner during installation.

### MODEL DENOTATION

#### Example of Set Product

**KR**

Return Idler Set

**400**

Belt Width

#### Example of Bracket Only

**RH**

Return Bracket

**400 to 900**

Belt Width

■Belt width for 400 to 900W

#### Example of Bracket Only

**RH**

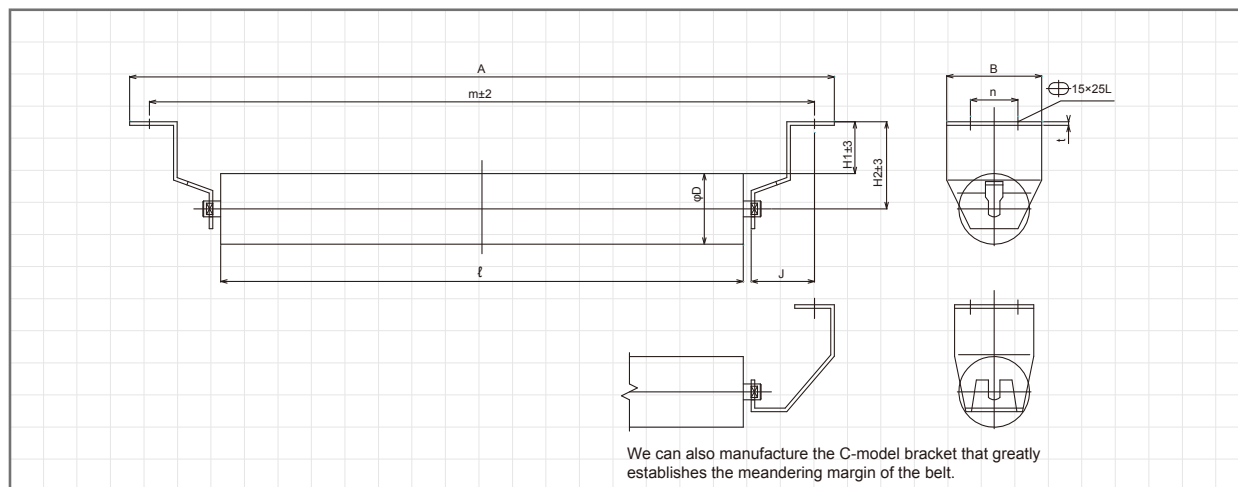
Return Bracket

**1050 to 1200**

Belt Width

■Belt width for 1050 to 1200W

### SIZE



(Unit: mm)

Model	Belt Width	D	ℓ	m	A	H1	H2	J	n	B	t	Weight of Set (kg)	Weight of Bracket (kg) (Set of 2)
KR-400	400	89.1	460	640	690	65	110	80	60	120	4.5	6.2	1.4
KR-450	450	89.1	510	690	740	65	110	80	60	120	4.5	6.6	1.4
KR-500	500	89.1	560	740	790	65	110	80	60	120	4.5	7.0	1.4
KR-600	600	89.1	660	840	890	65	110	80	60	120	4.5	8.0	1.4
KR-750	750	114.3	850	1040	1090	53	110	80	60	120	4.5	12.6	1.4
KR-900	900	114.3	1000	1190	1240	53	110	80	60	120	4.5	14.4	1.4
KR-1050	1050	139.8	1150	1340	1390	60	130	80	100	150	6.0	21.6	3.0
KR-1200	1200	139.8	1300	1490	1540	60	130	80	100	150	6.0	24.0	3.0

The KR bracket weight is that of two brackets, one on the left and one on the right.

# RR

## Individual Return Idler



The individual RR-model return idler can also be used with the  
KR-model return idler set, KFC-1-model flat carrier idler set and  
KAR-model self-aligning return idler set.

### MODEL DENOTATION

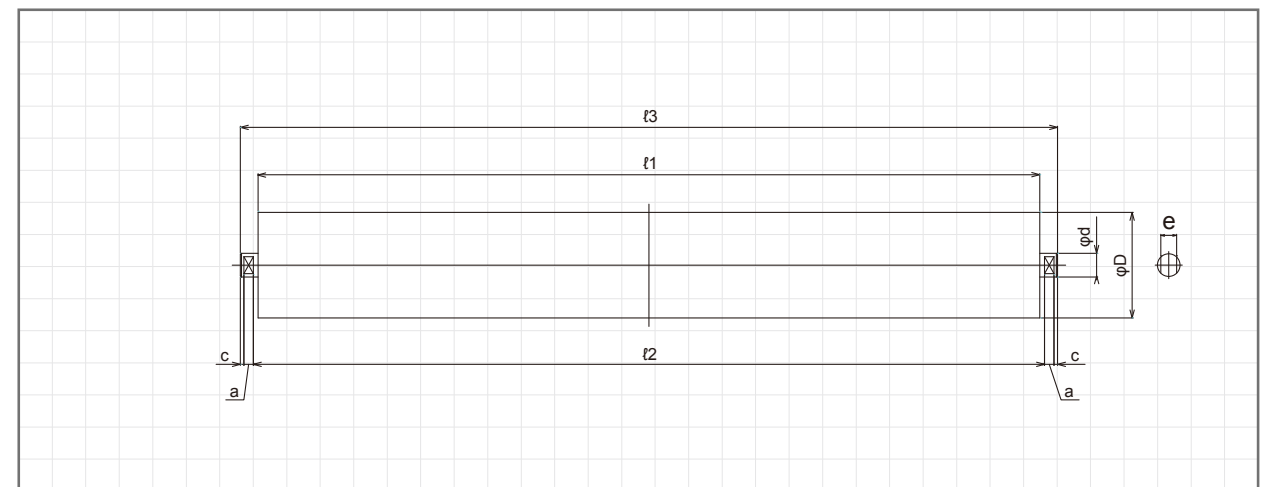
**RR**

Return Idler

**400**

Belt Width

### SIZE



(Unit: mm)

Model	Belt Width	D	ℓ1	ℓ2	ℓ3	c	a	e	d	BBNo.	Weight of Idler (kg)
RR-400	400	89.1	460	480	505	4.5	8	14	20	6204 2RS	4.8
RR-450	450	89.1	510	530	555	4.5	8	14	20	6204 2RS	5.2
RR-500	500	89.1	560	580	605	4.5	8	14	20	6204 2RS	5.6
RR-600	600	89.1	660	680	705	4.5	8	14	20	6204 2RS	6.6
RR-750	750	114.3	850	880	905	4.5	8	14	20	6204 2RS	11.2
RR-900	900	114.3	1000	1030	1055	4.5	8	14	20	6204 2RS	13.0
RR-1050	1050	139.8	1150	1180	1215	6.5	11	18	25	6205 ZZ	18.6
RR-1200	1200	139.8	1300	1330	1365	6.5	11	18	25	6205 ZZ	21.0

# KSR

## Spiral Return Idler Set

A cleaning idler attached to the return side of a conveyor belt.  
The meandering of the belt must be prevented as the spirals rotate and clean any dust particles and dirt from the belt.



### MODEL DENOTATION

#### Example of Set Product

**KSR**
**-**
**400**

Spiral Return Idler Set

Belt Width

#### Example of Bracket Only

**RH**
**-**
**400 to 900**

Return Bracket

Belt Width

■ Belt width for 400 to 900W

#### Example of Bracket Only

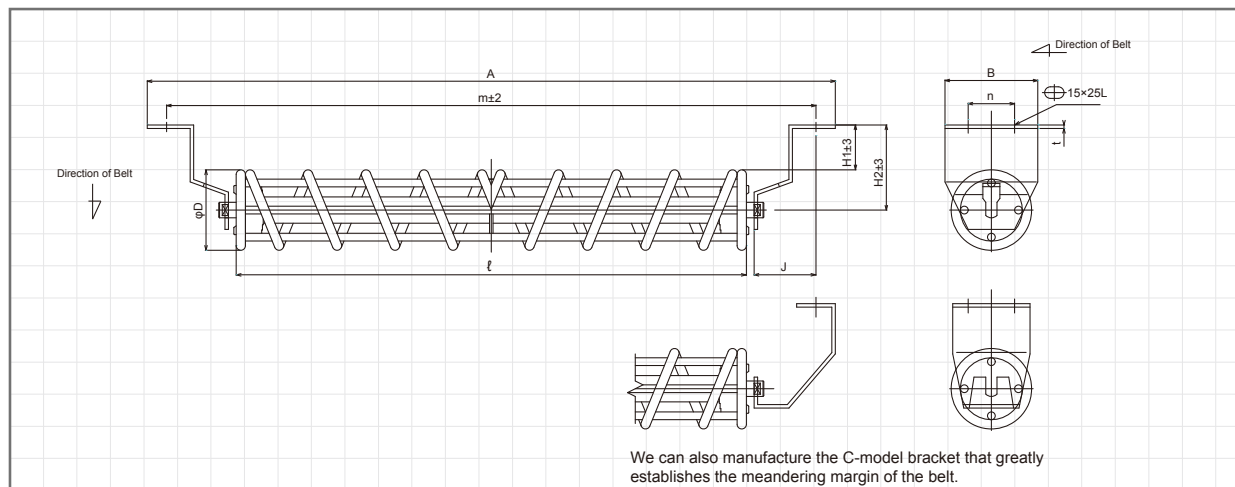
**RH**
**-**
**1050 to 1200**

Return Bracket

Belt Width

■ Belt width for 1050 to 1200W

### SIZE



(Unit: mm)

Model	Belt Width	D	ℓ	m	A	H1	H2	J	n	B	t	Weight of Set (kg)	Weight of Bracket (kg) (Set of 2)
KSR-400	400	104	460	640	690	58	110	80	60	120	4.5	7.8	1.6
KSR-450	450	104	510	690	740	58	110	80	60	120	4.5	8.3	1.6
KSR-500	500	104	560	740	790	58	110	80	60	120	4.5	8.8	1.6
KSR-600	600	104	660	840	890	58	110	80	60	120	4.5	9.8	1.6
KSR-750	750	120	850	1040	1090	50	110	80	60	120	4.5	12.5	1.6
KSR-900	900	120	1000	1190	1240	50	110	80	60	120	4.5	14.2	1.6
KSR-1050	1050	140	1150	1340	1390	60	130	80	100	150	6.0	24.0	3.0
KSR-1200	1200	140	1300	1490	1540	60	130	80	100	150	6.0	26.1	3.0

The KSR bracket weight is that of two brackets, one on the left and one on the right.

# SRR

## Individual Spiral Return Idler



### MODEL DENOTATION

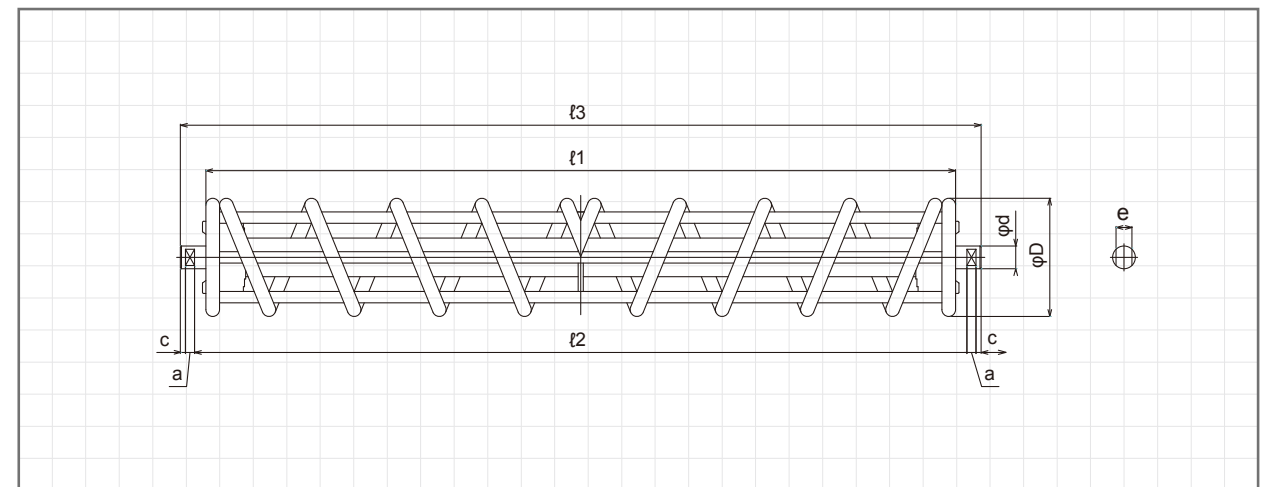
**SRR**

Spiral Return Idler

**-**
**400**

Belt Width

### SIZE



(Unit: mm)

Model	Belt Width	D	ℓ1	ℓ2	ℓ3	c	a	e	d	BBNo.	Weight of Idler (kg)
SRR-400	400	104	460	480	505	4.5	8	14	20	6204 2RS	6.2
SRR-450	450	104	510	530	555	4.5	8	14	20	6204 2RS	6.7
SRR-500	500	104	560	580	605	4.5	8	14	20	6204 2RS	7.2
SRR-600	600	104	660	680	705	4.5	8	14	20	6204 2RS	8.2
SRR-750	750	120	850	880	905	4.5	8	14	20	6204 2RS	10.9
SRR-900	900	120	1000	1030	1055	4.5	8	14	20	6204 2RS	12.6
SRR-1050	1050	140	1150	1180	1215	6.5	11	18	25	6205 ZZ	21.0
SRR-1200	1200	140	1300	1330	1365	6.5	11	18	25	6205 ZZ	23.1



# KAR

## Self-Aligning Return Idler

An idler attached to the return side to prevent meandering. Similar to the properties of the self-aligning carrier Idler, it serves to push the belt back into place.



### MODEL DENOTATION

Example of Set Product

## KAR

Self-Aligning Return Idler Set

## - 400

Belt Width

Example of Stand Only

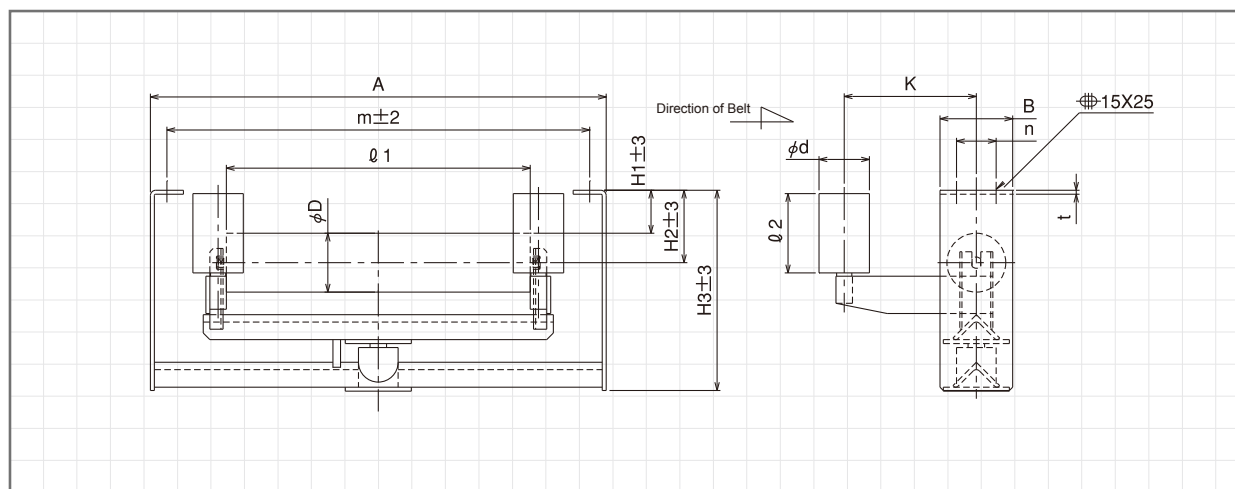
## KARB

Self-Aligning Return Stand

\*Not including Guide Idler

## - 400

### SIZE



(Unit: mm)

Model	Belt Width	D	ℓ1	d	ℓ2	m	A	H1	H2	H3	K	n	B	t	Weight of Set (kg)	Weight of Bracket (kg) (Set of 2)
KAR-400	400	89.1	460	76.3	120	640	690	65	110	303	200	60	110	6.0	20.6	13.2
KAR-450	450	89.1	510	76.3	120	690	740	65	110	303	200	60	110	6.0	21.5	13.7
KAR-500	500	89.1	560	76.3	120	740	790	65	110	303	200	60	110	6.0	22.4	14.2
KAR-600	600	89.1	660	76.3	120	840	890	65	110	303	200	60	110	6.0	24.6	15.4
KAR-750	750	114.3	850	76.3	120	1040	1090	53	110	320	200	60	110	6.0	33.4	19.6
KAR-900	900	114.3	1000	76.3	120	1190	1240	53	110	327	200	60	110	6.0	35.9	20.3
KAR-1050	1050	139.8	1150	89.1	150	1340	1400	60	130	366	240	100	150	9.0	57.0	35.0
KAR-1200	1200	139.8	1300	89.1	150	1490	1550	60	130	380	240	100	150	9.0	62.3	37.9

# RR

## Individual Return Idler

The individual RR-model return idler can also be used with the KR-model return idler set, KFC-1-model flat carrier idler set and KAR-model self-aligning return idler set.



### MODEL DENOTATION

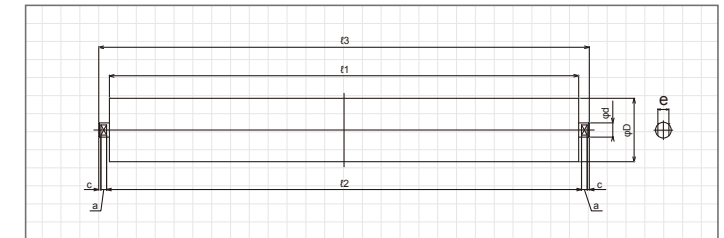
## RR

Return Idler

## - 400

Belt Width

### SIZE



(Unit: mm)

Model	Belt Width	D	ℓ1	ℓ2	ℓ3	c	a	e	d	BBNo.	Weight of Idler (kg)
RR-400	400	89.1	460	480	505	4.5	8	14	20	6204 2RS	4.8
RR-450	450	89.1	510	530	555	4.5	8	14	20	6204 2RS	5.2
RR-500	500	89.1	560	580	605	4.5	8	14	20	6204 2RS	5.6
RR-600	600	89.1	660	680	705	4.5	8	14	20	6204 2RS	6.6
RR-750	750	114.3	850	880	905	4.5	8	14	20	6204 2RS	11.2
RR-900	900	114.3	1000	1030	1055	4.5	8	14	20	6204 2RS	13.0
RR-1050	1050	139.8	1150	1180	1215	6.5	11	18	25	6205 ZZ	18.6
RR-1200	1200	139.8	1300	1330	1365	6.5	11	18	25	6205 ZZ	21.0

# GR

## Individual Guide Idler

The individual GR-model guide idler is also used in the KAC-model self-aligning carrier idler set, the KAR-model self-aligning return idler set and each of the KCG-model/KRG-model/KFG-model guide idler sets.



### MODEL DENOTATION

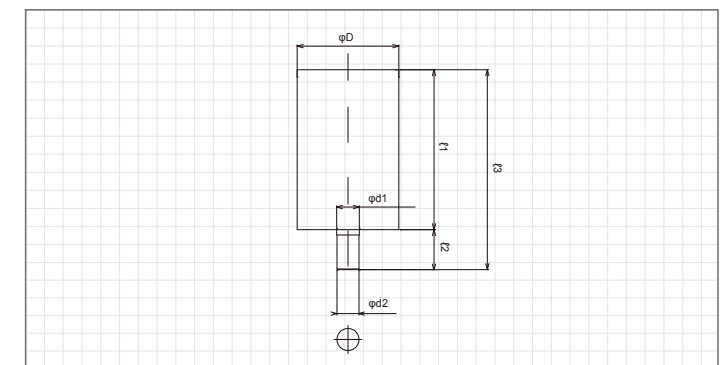
## GR

Guide Idler

## - 120

Idler Length

### SIZE



(Unit: mm)

Model	Belt Width	D	ℓ1	ℓ2	ℓ3	d1	d2	BBNo.	Weight of Idler (kg)
GR-120	400 to 600	76.3	120	30	150	17	16.5	6203 ZZ	1.3
GR-120	750	76.3	120	30	150	17	16.5	6203 ZZ	1.3
GR-120	900	76.3	120	30	150	17	16.5	6203 ZZ	1.3
GR-150	1050 to 1200	89.1	150	30	180	17	16.5	6203 ZZ	1.7

# KART

## T-model Self-Aligning Return Idler Set



With the purpose of correcting meandering in the same way as the KAR-model self-aligning return idler set, meandering can be corrected even without a guide idler on both ends by using idlers with tapered rubber lining. In addition, the friction of the idler and belt means damage to the belt can be greatly prevented by the use of rubber lining. This is mainly used for conveyors that perform forward and reverse movement.

### MODEL DENOTATION

Example of Set Product

**KART**

T-model Self-Aligning  
Return Idler Set

- **400**

Belt Width

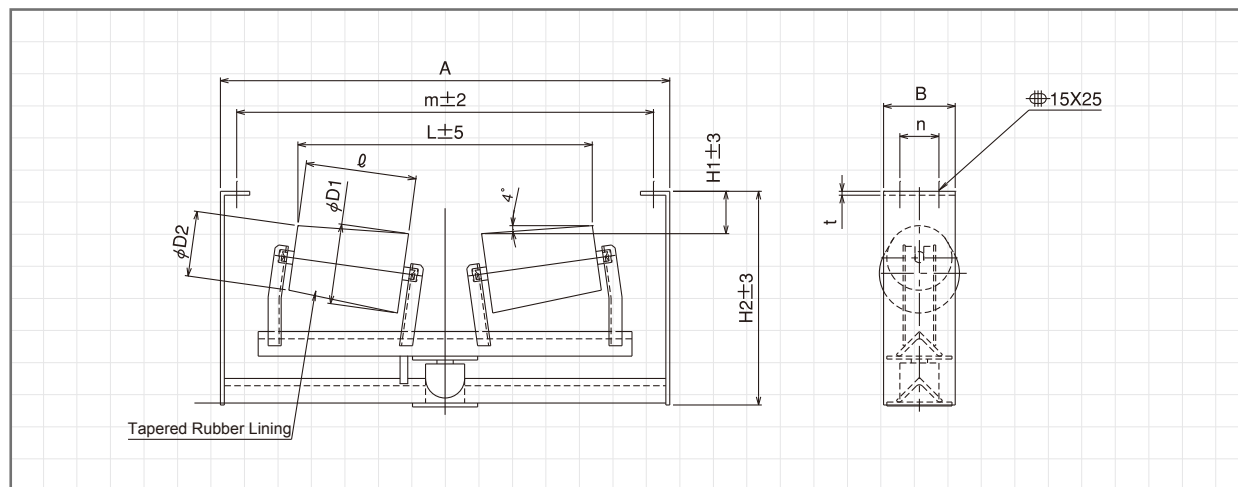
Example of Stand Only

**KARTB**

T-model Self-Aligning Return Stand

- **400**

### SIZE



(Unit: mm)

Model	Belt Width	D1	D2	ℓ	m	A	H1	H2	L	n	B	t	Weight of Set (kg)	Weight of Stand (kg)
KART-400	400	123	100	170	640	690	65	315	452	60	110	6.0	18.7	12.9
KART-450	450	126	100	190	690	740	65	316	512	60	110	6.0	19.9	13.5
KART-500	500	128	100	210	740	790	65	318	575	60	110	6.0	21.3	14.1
KART-600	600	130	100	220	840	890	65	318	649	60	110	6.0	22.8	15.4
KART-750	750	137	100	270	1040	1090	53	334	798	60	110	6.0	29.6	20.2
KART-900	900	145	100	330	1190	1240	53	345	955	60	110	6.0	34.0	22.2
KART-1050	1050	153	100	390	1340	1400	60	375	1135	100	150	9.0	52.0	36.2
KART-1200	1200	159	100	420	1490	1550	60	391	1262	100	150	9.0	56.8	39.2

# TRR

## Individual T-model Return Idler



### MODEL DENOTATION

**TRR**

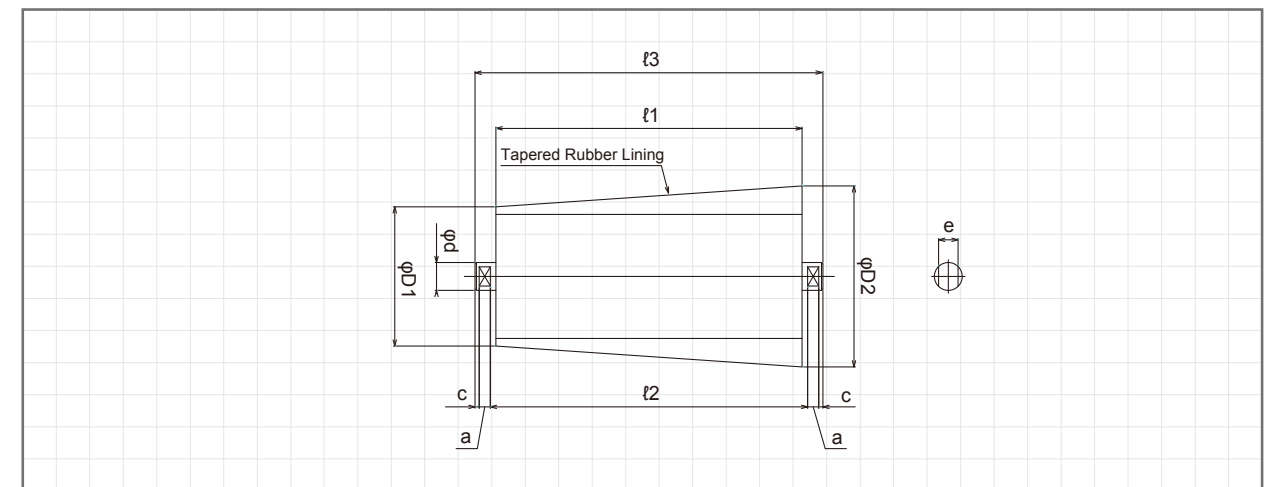
T-model Return Idler

-

**400**

Belt Width

### SIZE



(Unit: mm)

Model	Belt Width	D1	D2	ℓ1	ℓ2	ℓ3	c	a	e	d	BBNo.	Weight of Idler (kg)
TRR-400	400	100	123	170	178	200	3	8	14	20	6204 2RS	2.9
TRR-450	450	100	126	190	198	220	3	8	14	20	6204 2RS	3.2
TRR-500	500	100	128	210	218	240	3	8	14	20	6204 2RS	3.6
TRR-600	600	100	130	220	228	250	3	8	14	20	6204 2RS	3.7
TRR-750	750	100	137	270	278	300	3	8	14	20	6204 2RS	4.7
TRR-900	900	100	145	330	338	360	3	8	14	20	6204 2RS	5.9
TRR-1050	1050	100	153	390	400	430	4	11	18	25	6205 ZZ	7.9
TRR-1200	1200	100	159	420	430	460	4	11	18	25	6205 ZZ	8.8

# KARP

## A-model Hold Return Idler Set

An idler attached to the return side to prevent meandering. Affixed to the sides of the head and tail pulleys, the steeply inclined idler angle serves to keep the belt in the center. An idler that is particularly outstanding as a meandering prevention tool.



### MODEL DENOTATION

Example of Set Product

**KARP**

A-model Hold Return Idler Set

- **400**

Belt Width

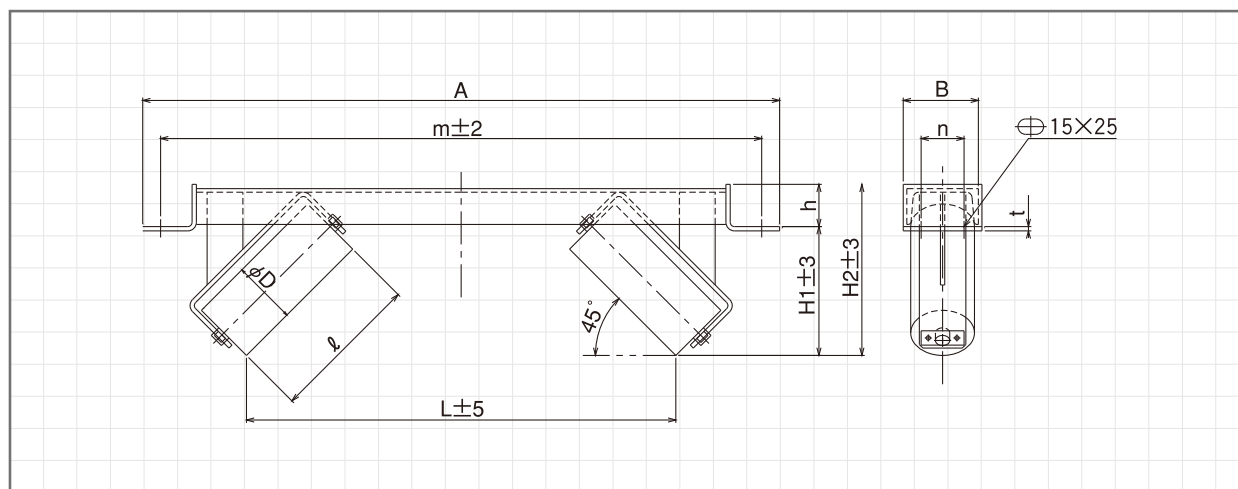
Example of Stand Only

**KARPB**

A-model Hold Return Stand

- **400**

### SIZE

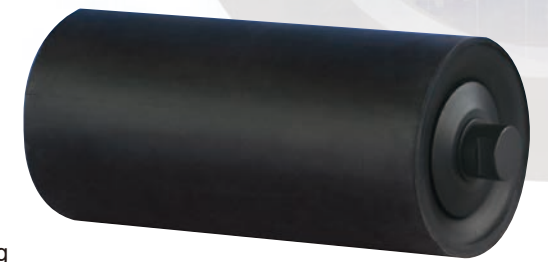


Model	Belt Width	D	ℓ	m	A	H1	H2	h	L	n	B	t	(Unit: mm)	
KARP-400	400	89.1	180	640	690	170	230	60	440	60	110	6.0	Weight of Set (kg)	13.0
KARP-450	450	89.1	180	690	740	170	230	60	490	60	110	6.0	Weight of Stand (kg)	8.4
KARP-500	500	89.1	180	740	790	170	230	60	540	60	110	6.0		8.9
KARP-600	600	89.1	210	840	890	190	251	61	600	60	110	6.0		9.4
KARP-750	750	114.3	315	1040	1090	235	335	100	790	60	160	6.0		10.7
KARP-900	900	114.3	315	1190	1240	235	335	100	940	60	160	6.0		14.4
KARP-1050	1050	139.8	370	1340	1390	274	396	122	1080	100	200	9.0		15.8
KARP-1200	1200	139.8	370	1490	1540	274	396	122	1230	100	200	9.0		25.2
														41.2
														27.2

# CR

## Individual Carrier Idler

The individual CR-model carrier idler is also used in the KC-model carrier idler set, KAC-model self-aligning carrier idler set and A-model hold return idler set.



### MODEL DENOTATION

**CR**

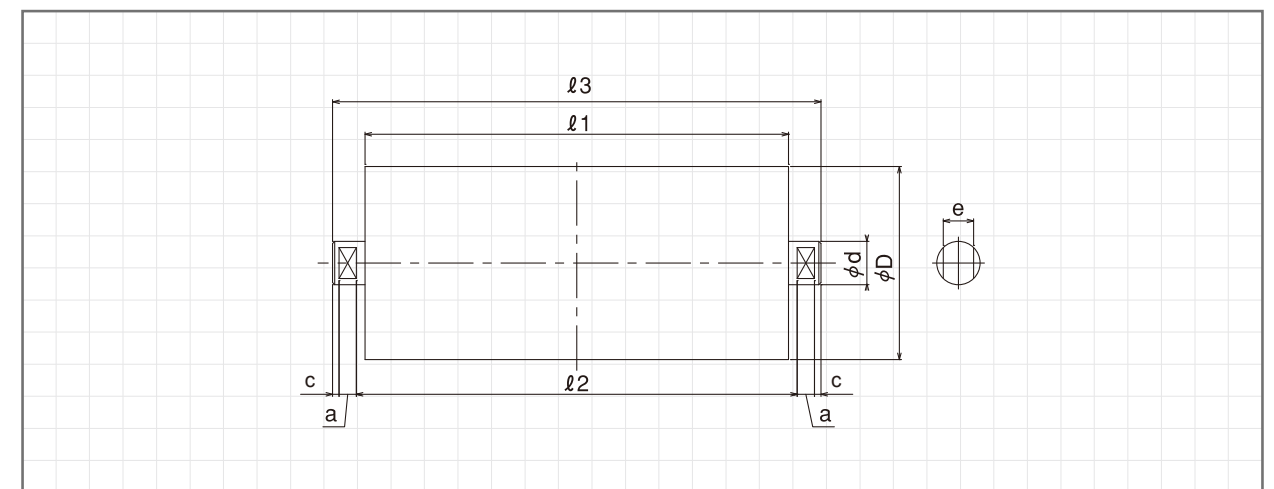
Carrier Idler

-

**400**

Belt Width

### SIZE



Set Model	Idler Model	Belt Width	D	ℓ1	ℓ2	ℓ3	c	a	e	d	BBNo.	Weight of Idler (kg)	(Unit: mm)	
KARP-400	CR-500	500	89.1	180	188	210	3	8	14	20	6204 2RS	2.3		
KARP-450	CR-500	500	89.1	180	188	210	3	8	14	20	6204 2RS	2.3		
KARP-500	CR-500	500	89.1	180	188	210	3	8	14	20	6204 2RS	2.3		
KARP-600	CR-600	600	89.1	210	218	240	3	8	14	20	6204 2RS	2.4		
KARP-750	CR-900	900	114.3	315	323	345	3	8	14	20	6204 2RS	4.6		
KARP-900	CR-900	900	114.3	315	323	345	3	8	14	20	6204 2RS	4.6		
KARP-1050	CR-1050	1050	139.8	370	380	410	4	11	18	25	6205 ZZ	7.0		
KARP-1200	CR-1050	1050	139.8	370	380	410	4	11	18	25	6205 ZZ	7.0		



# KVRP

## V-model Hold Return Idler Set

An idler attached to the return side to prevent meandering.  
As with the 'A-model Hold Return Idler', this serves to keep the belt in the center.



### MODEL DENOTATION

Example of Set Product

**KVRP**

V-model Hold Return Idler Set

-

**400**

Belt Width

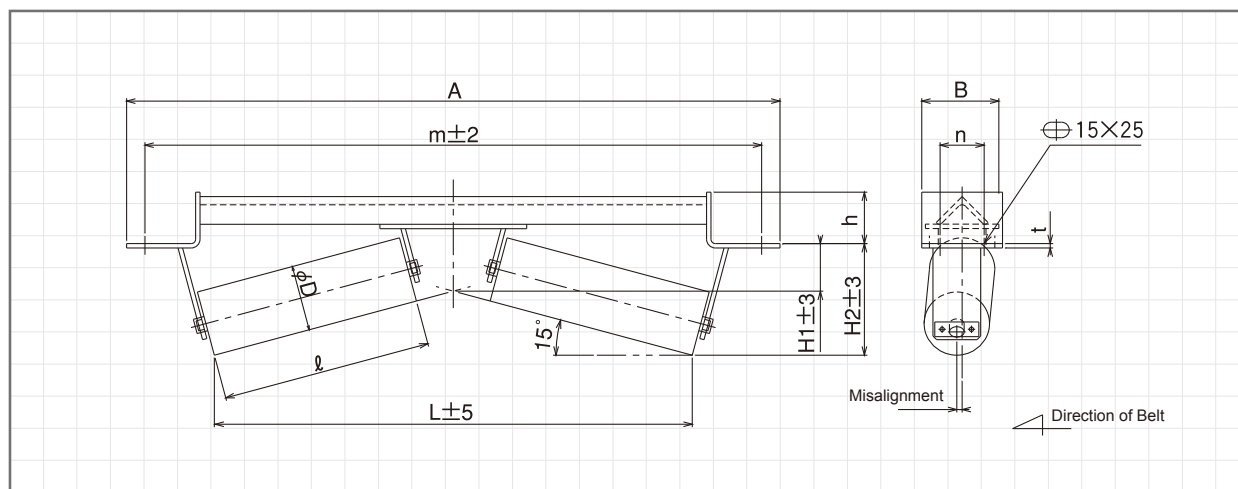
Example for Stand Only

**KVRPB**

V-model Hold Return Stand

- **400**

### SIZE



We can also manufacture any requested troughing angle degrees beyond 15°. Please consult with us for details.

(Unit: mm)													
Model	Belt Width	D	ℓ	m	A	H1	H2	h	L	n	B	t	Weight of Set (kg)
KVRP-400	400	89.1	200	640	690	78	130	70	487	60	110	6.0	10.5
KVRP-450	450	89.1	215	690	740	78	134	70	516	60	110	6.0	11.0
KVRP-500	500	89.1	235	740	790	78	139	70	555	60	110	6.0	11.7
KVRP-600	600	89.1	285	840	890	78	152	70	651	60	110	6.0	13.0
KVRP-750	750	114.3	365	1040	1090	67	161	116	809	60	110	6.0	20.0
KVRP-900	900	114.3	440	1190	1240	67	181	123	954	60	110	6.0	22.8
KVRP-1050	1050	139.8	490	1340	1390	80	207	142	1094	100	150	9.0	34.5
KVRP-1200	1200	139.8	565	1490	1540	80	226	153	1239	100	150	9.0	38.0
Weight of Stand (kg)													

# VRPR

## Individual V-model Hold Return Idler



### MODEL DENOTATION

**VRPR**

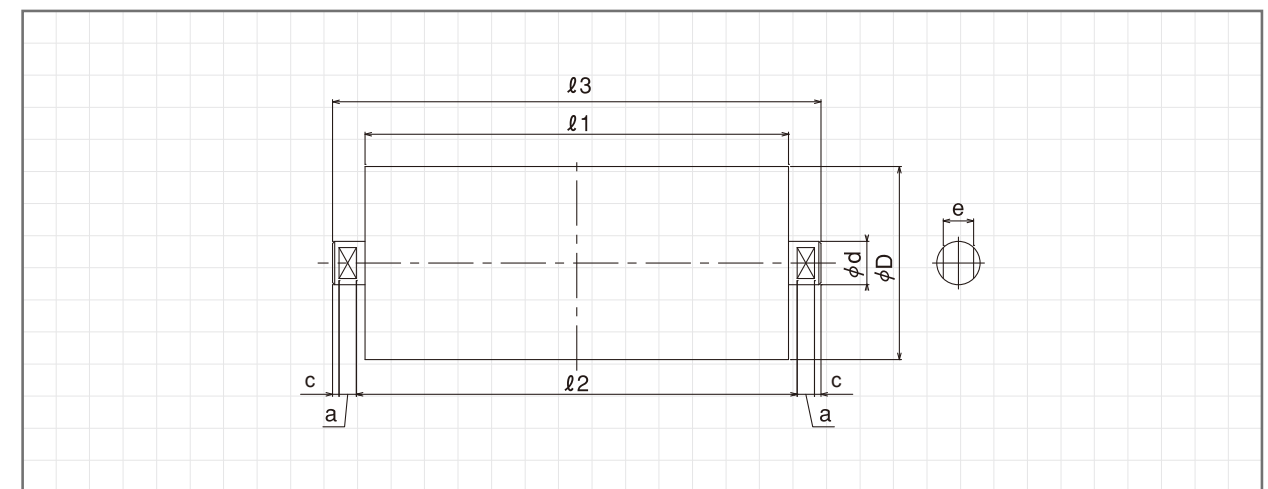
V-model Hold Return Idler

-

**400**

Belt Width

### SIZE



(Unit: mm)											
Model	Belt Width	D	ℓ1	ℓ2	ℓ3	c	a	e	d	BBNo.	Weight of Idler (kg)
VRPR-400	400	89.1	200	208	230	3	8	14	20	6204 2RS	2.4
VRPR-450	450	89.1	215	223	245	3	8	14	20	6204 2RS	2.5
VRPR-500	500	89.1	235	243	265	3	8	14	20	6204 2RS	2.7
VRPR-600	600	89.1	285	293	315	3	8	14	20	6204 2RS	3.1
VRPR-750	750	114.3	365	373	395	3	8	14	20	6204 2RS	5.2
VRPR-900	900	114.3	440	448	470	3	8	14	20	6204 2RS	6.1
VRPR1050	1050	139.8	490	500	530	4	11	18	25	6205 ZZ	8.9
VRPR-1200	1200	139.8	565	575	605	4	11	18	25	6205 ZZ	10.0

# KGSR

## Rubber Sleeved Return Idler Set



An idler to be affixed to the return side.

As only the rubber rings placed around the idler make contact with the belt, this serves to ensure whatever is attached to the belt is not accidentally knocked off. Please note that the number of rings differs depending on the width of the belt.

### MODEL DENOTATION

Example of Set Product

**KGSR - 400**

Rubber Sleeved  
Return Idler Set

Belt Width

Example of Bracket Only

**RH - 400 to 900**

Return Bracket

Belt Width

■ Belt width for 400 to 900W

Example of Bracket Only

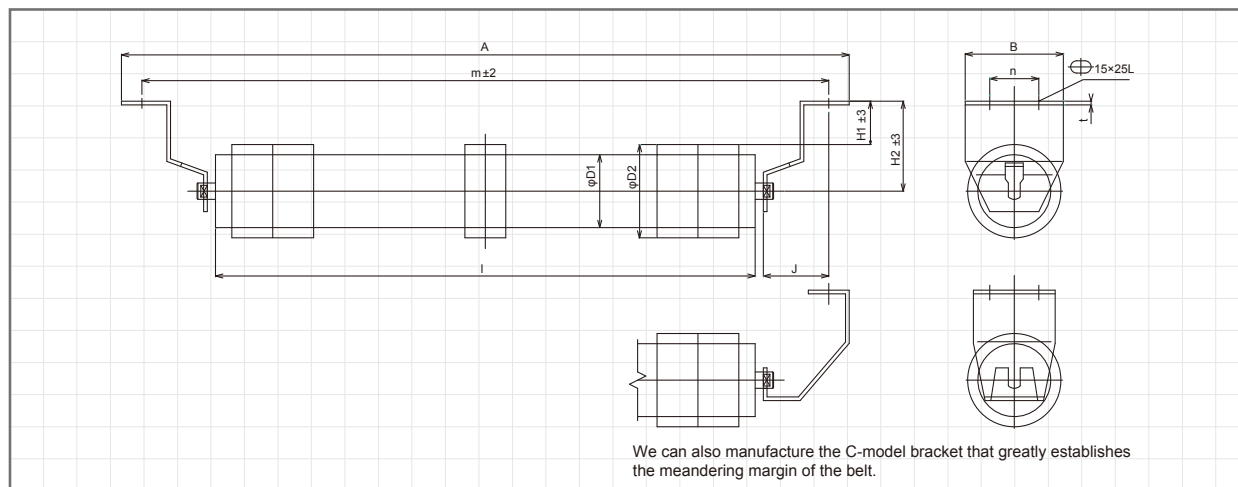
**RH - 1050 to 1200**

Return Bracket

Belt Width

■ Belt width for 1050 to 1200W

### SIZE



Model	Belt Width	D1	D2	ℓ	m	A	H1	H2	J	n	B	t	Weight of Set (kg)	Weight of Bracket (kg) (Set of 2)
KGSR-400	400	89.1	114	460	640	690	53	110	80	60	120	4.5	7.5	1.6
KGSR-450	450	89.1	114	510	690	740	53	110	80	60	120	4.5	7.9	1.6
KGSR-500	500	89.1	114	560	740	790	53	110	80	60	120	4.5	8.3	1.6
KGSR-600	600	89.1	114	660	840	890	53	110	80	60	120	4.5	9.3	1.6
KGSR-750	750	114.3	144	850	1040	1090	38	110	80	60	120	4.5	13.7	1.6
KGSR-900	900	114.3	144	1000	1190	1240	38	110	80	60	120	4.5	17.5	1.6
KGSR-1050	1050	139.8	170	1150	1340	1390	45	130	80	100	150	6.0	25.4	3.0
KGSR-1200	1200	139.8	170	1300	1490	1540	45	130	80	100	150	6.0	27.8	3.0

The KGSR bracket weight is that of two brackets, one on the left and one on the right.

# GSRR

## Individual Rubber Sleeved Return Idler



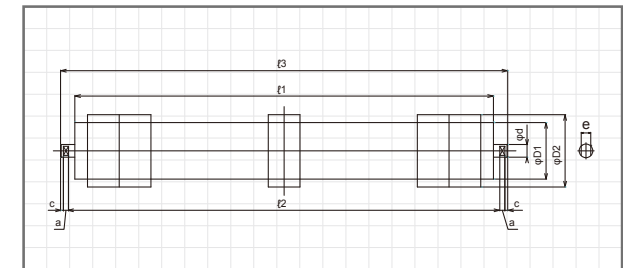
### MODEL DENOTATION

**GSRR - 400**

Rubber Sleeved  
Return Idler

Belt Width

### SIZE



(Unit: mm)

Model	Belt Width	D1	D2	ℓ1	ℓ2	ℓ3	c	a	e	d	BBNo.	Weight of Idler (kg)
GSRR-400	400	89.1	114	460	480	505	4.5	8	14	20	6204 2RS	5.9
GSRR-450	450	89.1	114	510	530	555	4.5	8	14	20	6204 2RS	6.3
GSRR-500	500	89.1	114	560	580	605	4.5	8	14	20	6204 2RS	6.7
GSRR-600	600	89.1	114	660	680	705	4.5	8	14	20	6204 2RS	7.7
GSRR-750	750	114.3	144	850	880	905	4.5	8	14	20	6204 2RS	12.1
GSRR-900	900	114.3	144	1000	1030	1055	4.5	8	14	20	6204 2RS	15.9
GSRR-1050	1050	139.8	170	1150	1180	1215	6.5	11	18	25	6205 ZZ	22.4
GSRR-1200	1200	139.8	170	1300	1330	1365	6.5	11	18	25	6205 ZZ	24.8

### Rubber Sleeved Return Idler Ring Size

<p>Model: GSRR-400</p>	<p>Model: GSRR-450</p>
<p>Model: GSRR-500</p>	<p>Model: GSRR-600</p>
<p>Model: GSRR-750</p>	<p>Model: GSRR-900</p>
<p>Model: GSRR-1050</p>	<p>Model: GSRR-1200</p>

# KRBR

## Anti Drop-Off Return Idler Set



This is the superior rubber sleeved return idler model.

As the diameter of the attached rings is made larger and the width lessened,

it has the property of widely decreasing the area in contact with the belt.

Please note that the number of rings differs depending on the width of the belt.

### MODEL DENOTATION

Example of Set Product

**KRBR**

Anti Drop-Off  
Return Idler Set

**400**

Belt Width

Example of Bracket Only

**RH**

Return Bracket

**400 to 900**

Belt Width

■ Belt width for 400 to 900W

Example of Bracket Only

**RH**

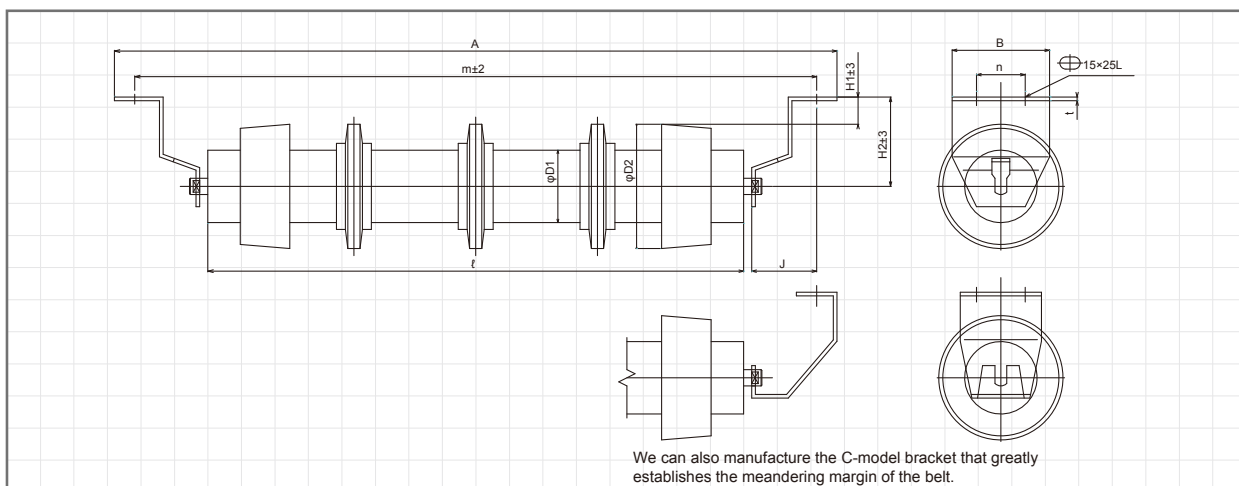
Return Bracket

**1050 to 1200**

Belt Width

■ Belt width for 1050 to 1200W

### SIZE



(Unit: mm)

Model	Belt Width	D1	D2	ℓ	m	A	H1	H2	J	n	B	t	Weight of Set (kg)	Weight of Bracket (kg) (Set of 2)
KRBR-400	400	89.1	153	460	640	690	34	110	80	60	120	4.5	8.3	1.6
KRBR-450	450	89.1	153	510	690	740	34	110	80	60	120	4.5	9.1	1.6
KRBR-500	500	89.1	153	560	740	790	34	110	80	60	120	4.5	9.5	1.6
KRBR-600	600	89.1	153	660	840	890	34	110	80	60	120	4.5	10.8	1.6
KRBR-750	750	89.1	153	850	1040	1090	34	110	80	60	120	4.5	12.8	1.6
KRBR-900	900	89.1	153	1000	1190	1240	34	110	80	60	120	4.5	14.1	1.6
KRBR-1050	1050	89.1	153	1150	1340	1390	54	130	80	100	150	6.0	18.8	3.0
KRBR-1200	1200	89.1	153	1300	1490	1540	54	130	80	100	150	6.0	20.7	3.0

The KRBR bracket weight is that of two brackets, one on the left and one on the right.

# RBRR

## Individual Anti Drop-Off Return Idler



### MODEL DENOTATION

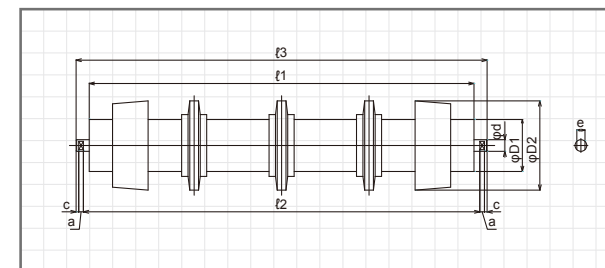
**RBRR**

Anti Drop-Off  
Return Idler

**400**

Belt Width

### SIZE



(Unit: mm)

Model	Belt Width	D1	D2	ℓ1	ℓ2	ℓ3	c	a	e	d	BBNo.	Weight of Idler (kg)
RBRR-400	400	89.1	153	460	480	505	4.5	8	14	20	6204 2RS	6.7
RBRR-450	450	89.1	153	510	530	555	4.5	8	14	20	6204 2RS	7.5
RBRR-500	500	89.1	153	560	580	605	4.5	8	14	20	6204 2RS	7.9
RBRR-600	600	89.1	153	660	680	705	4.5	8	14	20	6204 2RS	9.2
RBRR-750	750	89.1	153	850	880	905	4.5	8	14	20	6204 2RS	11.2
RBRR-900	900	89.1	153	1000	1030	1055	4.5	8	14	20	6204 2RS	12.5
RBRR-1050	1050	89.1	153	1150	1180	1215	6.5	11	18	25	6205 ZZ	15.8
RBRR-1200	1200	89.1	153	1300	1330	1365	6.5	11	18	25	6205 ZZ	17.7

### Rubber Sleeved Return Idler Ring Size

<p>Model: RBRR-400</p>	<p>Model: RBRR-450</p>
<p>Model: RBRR-500</p>	<p>Model: RBRR-600</p>
<p>Model: RBRR-750</p>	<p>Model: RBRR-900</p>
<p>Model: RBRR-1050</p>	<p>Model: RBRR-1200</p>



# KCG

## Carrier Guide Idler Set

### MODEL DENOTATION

Example of Set Product

**KCG**

- **20** -  
Troughing Angle

- **400** -  
Belt Width

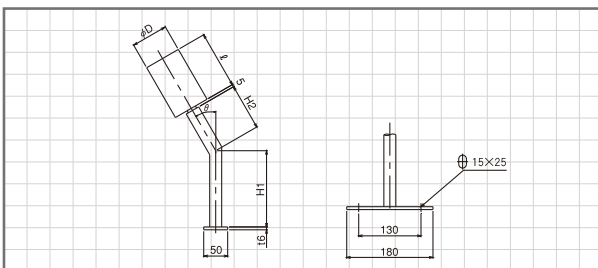
Example of Stand Only

**KCGB**

- **20** -  
Troughing Angle

- **400** -  
Belt Width

### SIZE



#### •Troughing Angle 20°

(Unit: mm)

Belt Width	D	ℓ	H1	H2	Weight of Set (kg)	Weight of Stand (kg)
400 to 500	76.3	120	67	106	2.1	0.8
600	76.3	120	97	106	2.2	0.9
750	89.1	150	89	145	2.7	1.0
900	89.1	150	99	154	2.8	1.1
1050 to 1200	89.1	150	134	185	2.9	1.2

#### •Troughing Angle 30°

Belt Width	D	ℓ	H1	H2	Weight of Set (kg)	Weight of Stand (kg)
400 to 500	76.3	120	127	90	2.2	0.9
600	76.3	120	159	97	2.3	1.0
750	89.1	150	184	114	2.8	1.1
900	89.1	150	199	126	2.9	1.2
1050 to 1200	89.1	150	279	170	3.2	1.5

# KRG

## Return Guide Idler Set

### MODEL DENOTATION

Example of Set Product

**KRG**

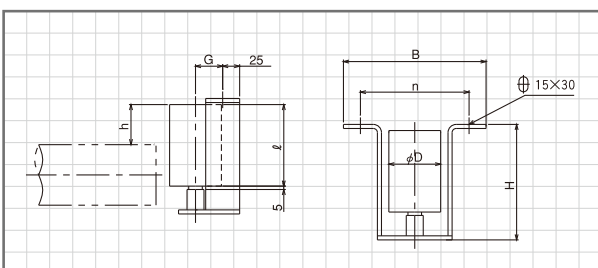
- **400** -  
Belt Width

Example of Stand Only

**KRGB**

- **400** -  
Belt Width

### SIZE



(Unit: mm)

Belt Width	D	ℓ	H	h
400 to 600	76.3	120	170	59
750 to 900	89.1	150	200	47
1050 to 1200	89.1	150	200	54

G	n	B	Weight of Set (kg)	Weight of Stand (kg)
40	160	210	3.1	1.8
35	160	210	3.7	2.0
35	160	210	3.7	2.0

# KFG

## Flat Guide Idler Set

### MODEL DENOTATION

Example of Set Product

**KFG**

Flat Carrier Guide Idler Set

- **400** -  
Belt Width

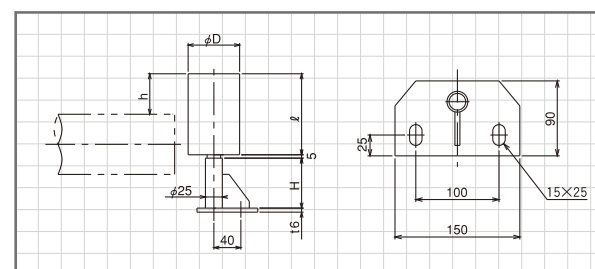
Example of Stand Only

**KFGB**

Flat Carrier Guide Stand

- **400** -  
Belt Width

### SIZE



(Unit: mm)

Belt Width	D	ℓ	H	h	Weight of Set (kg)	Weight of Stand (kg)
400 to 600	76.3	120	74	60	2.1	0.8
750	76.3	120	86	60	2.2	0.9
900	89.1	150	121	75	2.7	1.0
1050 to 1200	89.1	150	164	75	2.8	1.1

# GR

## Individual Guide Idler

The individual GR-model guide idler is also used in the KAC-model self-aligning carrier idler set, the KAR-model self-aligning return idler set and each of the KCG-model/KRG-model/KFG-model guide idler sets.



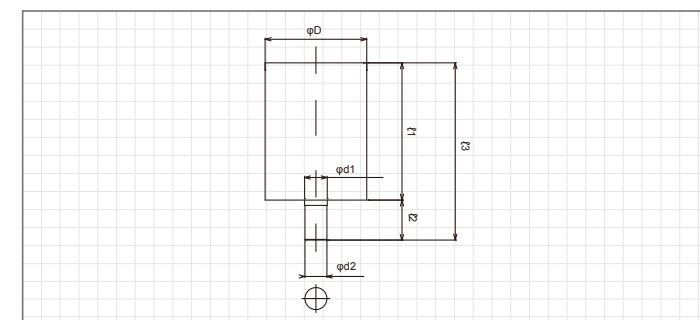
### MODEL DENOTATION

**GR**

Guide Idler

- **120** -  
Idler Length

### SIZE



(Unit: mm)

Belt Width	D	ℓ1	ℓ2	ℓ3	d1	d2	BBNo.	Weight of Idler (kg)
400 to 600 (GR-120)	76.3	120	30	150	17	16.5	6203 ZZ	1.3
750 (Only KFG) (GR-120)	76.3	120	30	150	17	16.5	6203 ZZ	1.3
750 to 900 (GR-150)	89.1	150	30	180	17	16.5	6203 ZZ	1.7
1050 to 1200 (GR-150)	89.1	150	30	180	17	16.5	6203 ZZ	1.7

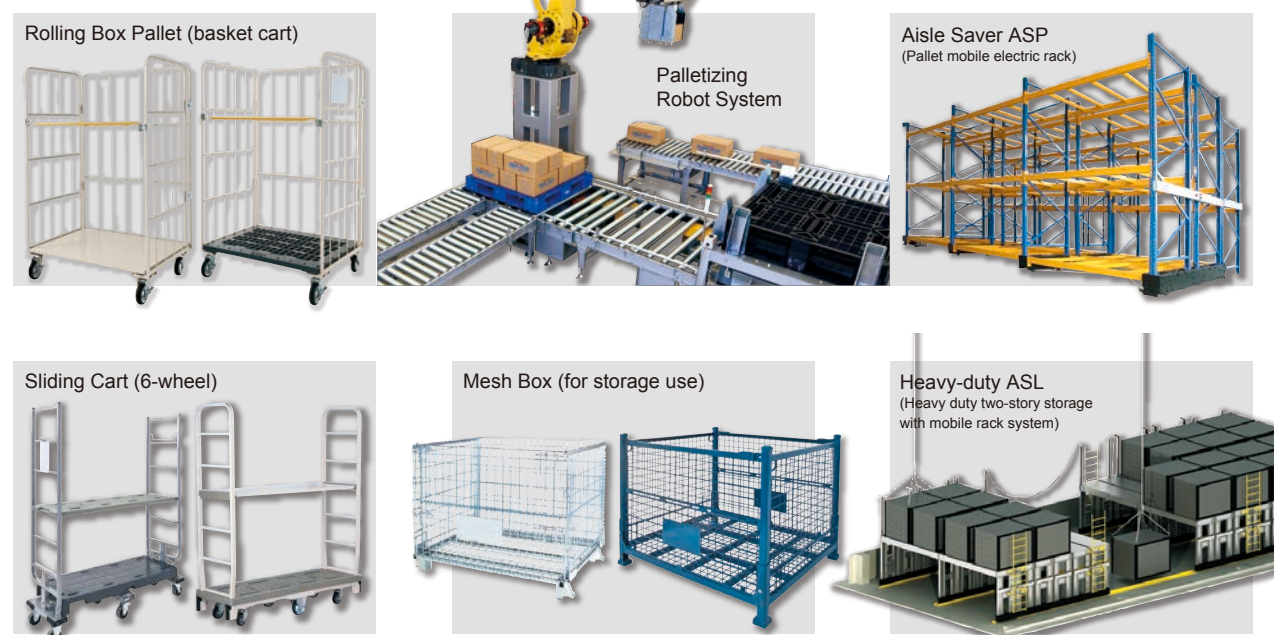


# An Introduction to the Makitech Product Line

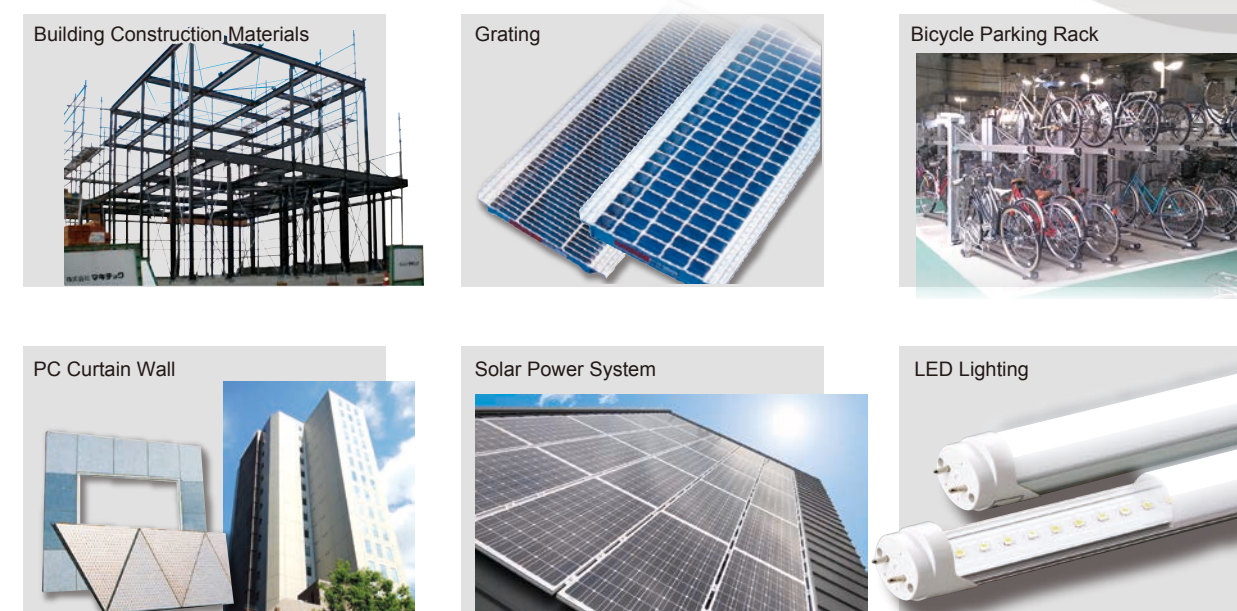
## Conveyor and Delivery Products



## Logistics/Distribution Products



## Construction/Building Materials Products



## Social service related products



## Contact Us Makitech Co., Ltd.

### International Division (For Inquiry)

2-1001 Kumaiden Nakagawa-ku Nagoya-shi, Aichi-ken 454-0984  
TEL +81-52-746-6533 FAX +81-52-309-7007

### Nagoya Carrier

2-1001 Kumaiden Nakagawa-ku Nagoya-shi, Aichi-ken 454-0984  
TEL +81-52-746-6530 FAX +81-52-309-7007

### Fukui Carrier

17-13-1 Genshojima-cho Fukui-shi, Fukui-ken 910-0822  
TEL +81-776-97-9752 FAX +81-776-97-9753

### Kyushu Carrier

1319-1 Uekimachi Iwano Kita-ku, Kumamoto-shi 861-0136  
TEL +81-96-277-6616 FAX +81-96-277-6617

### Fukuoka Carrier

1-17-7 Sanno Hakata-ku, Fukuoka-shi 812-0015  
TEL +81-92-433-8595 FAX +81-92-433-8587

### Fukui Factory

11-52 Matsuokaryoke Eiheji-cho, Yoshida-gun, Fukui-ken 910-1141  
TEL +81-776-61-3888 FAX +81-776-61-3523